

# **ASSFALG**

Qualitätshydraulik

Hydraulikflansche für

- Zahnradpumpen / -motoren  
(Diagonal & Parallel)
- Kolbenpumpen / -motoren  
(SAE 3000psi & 6000psi)
- Gruppe 827



**... mehr als Qualität**

# Flansche und Anschlussflansche für Pumpen und Motoren

Flanges for pumps and motors



**Produktübersicht**  
**Product overview**

## Flansche und Anschlussflansche für Pumpen und Motoren

### Flanges for pumps and motors

|   |           |
|---|-----------|
| <b>Anschlussflansch, gerade</b> .....                             | <b>5</b>  |
| Straight connectors .....   | 5         |
| <b>Verbindungsflansch, gerade, lange Version</b> .....            | <b>6</b>  |
| Flange connectors, extended version .....                         | 6         |
| <b>Verbindungsflansch, gerade, Außengewinde</b> .....             | <b>7</b>  |
| Straight connectors male thread .....                             | 7         |
| <b>Verbindungsflansch, gerade, anschweißbare Version</b> .....    | <b>9</b>  |
| Straight connectors, welding version .....                        | 9         |
| <b>3-Loch-Flansch für Pumpen und Motoren, Winkel 90°</b> .....    | <b>10</b> |
| Elbow Coupling, 90° .....   | 10        |
| <b>3-Loch-Sonderflansch für Pumpen und Motoren</b> .....          | <b>12</b> |
| Elbow Coupling spezial flange.....                                | 12        |
| <b>2-Loch-Flansch für Pumpen und Motoren</b> .....                | <b>13</b> |
| Elbow Coupling .....  | 13        |
| <b>4-Loch-Flansch mit Innengewinde, Winkel 90°</b> .....          | <b>14</b> |
| Elbow Coupling, 90°, female thread .....                          | 14        |
| <b>4-Loch-Flansch, Außengewinde, Winkel 90°</b> .....             | <b>15</b> |
| Elbow Coupling, 90°, male thread.....                             | 15        |
| <b>3-Loch-Flansch, 90°, nach DIn 3901, mit Außengewinde</b> ..... | <b>16</b> |
| Elbow Coupling, 90°, DIN 3901, with male thread .....             | 16        |
| <b>Universal-3-Loch-Flansch mit Innengewinde, 90°</b> .....       | <b>17</b> |
| Elbow Coupling, universal, 90°, with female thread .....          | 17        |
| <b>SAE – Flanschkörper, Serie 3000 PSI</b> .....                  | <b>18</b> |
| SAE Split flange, series 3000 PSI .....                           | 18        |
| <b>SAE – Flanschkörper, Serie 6000 PSI</b> .....                  | <b>19</b> |
| SAE Split flange, series 6000 PSI .....                           | 19        |

|   |           |
|---|-----------|
| <b>SAE – 90° Flansch mit Innengewinde, Serie 3000 PSI</b> ..... | <b>20</b> |
| SAE flange, 90°, pipe threaded flange, series 3000 PSI .....    | 20        |
| <b>SAE – 90° Flansch mit Innengewinde, Serie 6000 PSI</b> ..... | <b>21</b> |
| SAE flange, 90°, pipe threaded flange, series 6000 PSI .....    | 21        |
| <b>SAE – Einschweißflansch, 90°, Serie 3000 PSI</b> .....       | <b>22</b> |
| SAE 90° weld in flange, series 3000 PSI .....                   | 22        |
| <b>SAE – Einschweißflansch, 90°, Serie 6000 PSI</b> .....       | <b>23</b> |
| SAE 90° weld in flange, series 6000 PSI .....                   | 23        |
| <b>SAE – Anschweiß-Flansch, Serie 3000 PSI</b> .....            | <b>24</b> |
| SAE weld on flange, series 3000 PSI .....                       | 24        |
| <b>SAE – Anschweiß-Flansch, Serie 6000 PSI</b> .....            | <b>25</b> |
| SAE weld on flange, series 6000 PSI .....                       | 25        |
| <b>SAE – Gegenflansch zum Anschweißen, Serie 3000 PSI</b> ..... | <b>26</b> |
| SAE weld on counter flange, series 3000 PSI .....               | 26        |
| <b>SAE – Gegenflansch zum Anschweißen, Serie 6000 PSI</b> ..... | <b>27</b> |
| SAE weld on counter flange, series 6000 PSI .....               | 27        |
| <b>SAE – Flansch mit BSP-Innengewinde, Serie 3000 PSI</b> ..... | <b>28</b> |
| SAE flange with BSP thread, series 3000 PSI .....               | 28        |
| <b>SAE – Flansch mit BSP-Innengewinde, Serie 6000 PSI</b> ..... | <b>30</b> |
| SAE flange with BSP thread, series 6000 PSI .....               | 30        |
| <b>SAE – Gegenflansch mit Gewinde, Serie 3000 PSI</b> .....     | <b>31</b> |
| SAE counter flange thread, series 3000 PSI .....                | 31        |
| <b>SAE – Gegenflansch mit Gewinde, Serie 6000 PSI</b> .....     | <b>32</b> |
| SAE counter flange thread, series 6000 PSI .....                | 32        |
| <b>SAE – Einschweißflansch, Serie 3000 PSI</b> .....            | <b>33</b> |
| SAE weld in flange, series 3000 PSI .....                       | 33        |
| <b>SAE – Einschweißflansch, Serie 6000 PSI</b> .....            | <b>34</b> |
| SAE weld in flange, series 6000 PSI .....                       | 34        |
| <b>SAE – Einschweiß-Gegenflansch, Serie 3000 PSI</b> .....      | <b>35</b> |
| SAE – weld in counter flange, series 3000 PSI .....             | 35        |
| <b>SAE – Einschweiß-Gegenflansch, Serie 6000 PSI</b> .....      | <b>36</b> |
| SAE – weld in counter flange, series 6000 PSI .....             | 36        |
| <b>SAE – Abschlussplatte, Serie 3000 PSI</b> .....              | <b>37</b> |
| SAE – closed flanges, series 3000 PSI .....                     | 37        |
| <b>SAE – Abschlussplatte, Serie 6000 PSI</b> .....              | <b>38</b> |
| SAE – closed flanges, series 6000 PSI .....                     | 38        |

|   |           |
|---|-----------|
| <b>Technische Information: Schrauben und Sicherungsscheiben .....</b> | <b>39</b> |
| <b>Technical information: Screws and washers .....</b>                | <b>39</b> |
| <b>Technische Information: Flansch Material .....</b>                 | <b>39</b> |
| <b>Technical information: Flanges material .....</b>                  | <b>39</b> |
| <b>Technische Information: Verzinkung .....</b>                       | <b>39</b> |
| <b>Technical information: Galvanization .....</b>                     | <b>39</b> |
| <b>Technische Information: Maximaler Betriebsdruck.....</b>           | <b>39</b> |
| <b>Technical information: Maximum operating pressure.....</b>         | <b>39</b> |
| <b>Technische Information: O – Ringe.....</b>                         | <b>40</b> |
| <b>Technical information: O-Rings.....</b>                            | <b>40</b> |

**ASSFALG Qualitätshydraulik GmbH & Co. KG**  
 Am Pfarrgarten 8  
 D – 89597 Unterwachingen  
 Geschäftsführer: Bernd Assfalg & Andreas Assfalg

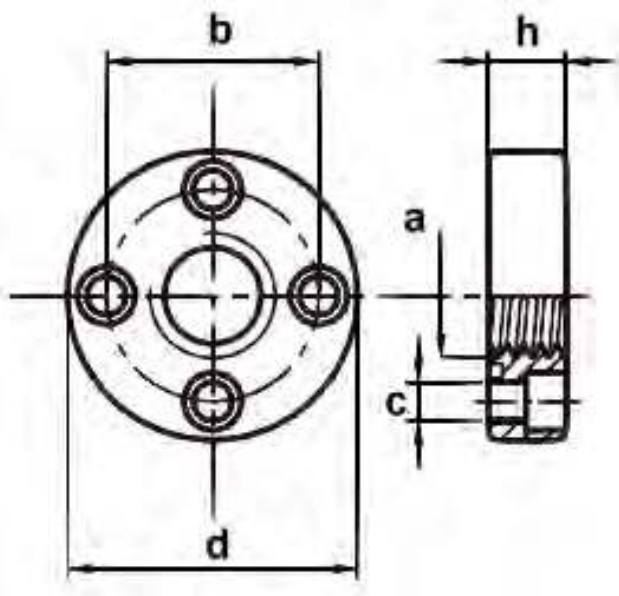
Telefon       + 49 (0) 73 93 / 95 45 – 0  
 Telefax       + 49 (0) 73 93 / 95 45 – 45

E-Mail         info@assfalg.com  
 Internet       www.assfalg.com



**Anschlussflansch, gerade**  
**Straight connectors**

Diese Anschlussflansche werden zum Verbinden von Pumpen und Motoren mit den weiterführenden Bauteilen, wie Schläuche oder Rohrleitungen, benutzt.



Material der Flansche:  
11SMnPb37 EN10277-3:1999  
Oberfläche verzinkt  
ISO 2081- 4520

Im Lieferumfang enthalten:  
4 x Schrauben DIN 912,  
Festigkeitsklasse 8.8  
4 x Federring DIN 7980  
1 x Dichtring (O-Ring) NBR

These flanges are used to connect pumps and motors with the secondary components, such as hoses or pipes.

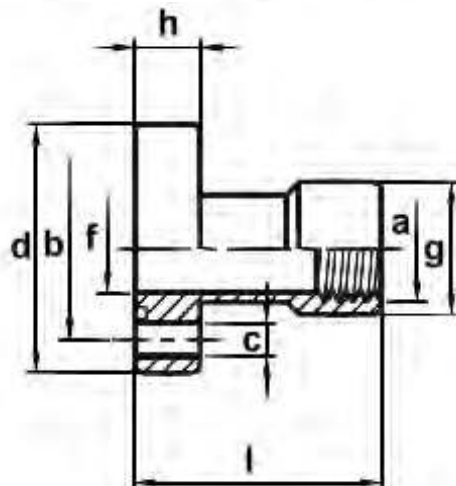
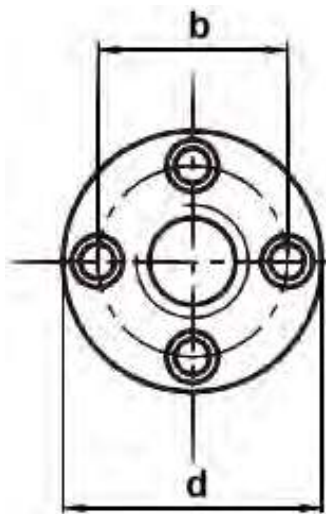
Material of the flanges:  
11SMnPb37 EN10277-3: 1999  
Surface Galvanization  
ISO 2081- 4520

The scope of delivery will include:  
4 x screws DIN 912, stability 8.8  
4 x washer DIN 7980  
1 x sealing ring (O-Ring) NBR

| Anschluss<br>a  | Ø LK<br>b  | Max. Druck<br>(bar)  | c    | d  | h  | Befestigung/<br>Löcher | Schrauben/<br>Gewinde | O-Ring       | Matchcode /<br>Code |
|-----------------|------------|----------------------|------|----|----|------------------------|-----------------------|--------------|---------------------|
| Connection<br>a | Ø dBC<br>b | Max. Press.<br>(bar) | c    | d  | h  | Holes                  | Metric<br>screws      | O-Ring       | Matchcode /<br>Code |
| 3/8"            | 30         | 250                  | 6,5  | 45 | 13 | 4                      | M 6 x 20              | 18,77 x 1,78 | AF 30 3/8"          |
| 3/8"            | 35         | 250                  | 6,5  | 50 | 26 | 4                      | M 6 x 20              | 18,72 x 2,62 | AF 35 3/8"          |
| 1/2"            | 35         | 250                  | 6,5  | 50 | 25 | 4                      | M 6 x 30              | 18,72 x 2,62 | AF 35 1/2"          |
| 1/2"            | 40         | 250                  | 8,5  | 60 | 15 | 4                      | M 8 x 25              | 23,81 x 2,62 | AF 40 1/2"          |
| 3/4"            | 40         | 250                  | 8,5  | 60 | 27 | 4                      | M 8 x 25              | 23,81 x 2,62 | AF 40 3/4"          |
| 3/4"            | 51         | 250                  | 10,5 | 75 | 17 | 4                      | M 10 x 25             | 31,42 x 2,62 | AF 51 3/4"          |
| 1"              | 51         | 250                  | 10,5 | 75 | 29 | 4                      | M 10 x 35             | 31,42 x 2,62 | AF 51 1"            |
| 3/4"            | 56         | 250                  | 10,5 | 80 | 18 | 4                      | M 10 x 35             | 37,77 x 2,62 | AF 56 3/4"          |
| 1"              | 56         | 250                  | 10,5 | 80 | 29 | 4                      | M 10 x 30             | 37,77 x 2,62 | AF 56 1"            |
| 1-1/4"          | 62         | 180                  | 10,5 | 80 | 39 | 4                      | M 10 x 40             | 37,69 x 3,53 | AF 62 1-1/4"        |
| 1-1/2"          | 72,5       | 180                  | 12,5 | 92 | 43 | 4                      | M 12 x 45             | 49,21 x 3,53 | AF 72,5 1-1/2"      |

\*: Nicht galvanisiert / not galvanized

**Verbindungsflansch, gerade, lange Version**  
**Flange connectors, extended version**



Diese Anschlussflansche werden zum Verbinden von Pumpen und Motoren mit den weiterführenden Bauteilen, wie z. B. Schläuche oder Rohrleitungen, benutzt.

Material der Flansche:  
11SMnPb37 EN10277-3:1999  
Oberfläche verzinkt  
ISO 2081- 4520

Im Lieferumfang enthalten:  
4 x Schrauben DIN 912,  
Festigkeitsklasse 8.8  
4 x Federring DIN 7980  
1 x Dichtring (O-Ring) NBR

These flanges are used to connect pumps and motors with the secondary components, such as hoses or pipes.

Material of the flanges:  
11SMnPb37 EN10277-3: 1999  
Surface Galvanization  
ISO 2081- 4520

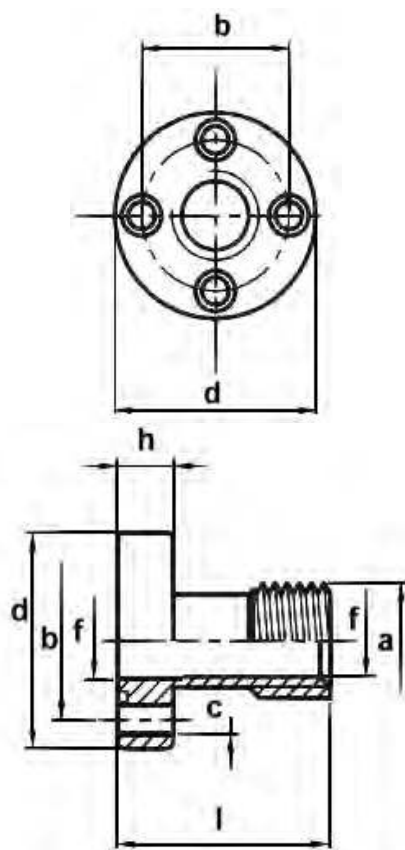
The scope of delivery will include:  
4 x screws DIN 912, stability 8.8  
4 x washer DIN 7980  
1 x sealing ring (O-Ring) NBR

| Anschluss<br>a  | Ø LK<br>b  | Max. Druck<br>(bar)  | c    | d  | f  | g  | h  | l  | Befestigung/<br>Löcher | Schrauben/<br>Gewinde | O-Ring       | Matchcode /<br>Code |
|-----------------|------------|----------------------|------|----|----|----|----|----|------------------------|-----------------------|--------------|---------------------|
| Connection<br>a | Ø dBC<br>b | Max. Press.<br>(bar) | c    | d  | f  | g  | h  | l  | Holes                  | Metric<br>screws      | O-Ring       | Matchcode /<br>Code |
| 3/8"            | 30         | 200                  | 6,5  | 44 | 11 | 29 | 10 | 54 | 4                      | M 6 x 20              | 15,88 x 2,62 | AFI 30 3/8"         |
| 1/2"            | 30         | 200                  | 6,5  | 44 | 11 | 29 | 10 | 54 | 4                      | M 6 x 20              | 15,88 x 2,62 | AFI 30 1/2"         |
| 3/8"            | 35         | 200                  | 6,5  | 48 | 11 | 29 | 10 | 54 | 4                      | M 6 x 30              | 18,72 x 2,62 | AFI 35 3/8"         |
| 1/2"            | 35         | 200                  | 6,5  | 48 | 11 | 29 | 10 | 54 | 4                      | M 6 x 30              | 18,77 x 2,62 | AFI 35 1/2"         |
| 1/2"            | 40         | 200                  | 8,5  | 51 | 19 | 36 | 12 | 63 | 4                      | M 8 x 25              | 23,81 x 2,62 | AFI 40 1/2"         |
| 3/4"            | 40         | 200                  | 8,5  | 53 | 19 | 36 | 12 | 63 | 4                      | M 8 x 25              | 23,81 x 2,62 | AFI 40 3/4"         |
| 3/4"            | 51         | 180                  | 10,5 | 68 | 27 | 43 | 12 | 62 | 4                      | M 10 x 25             | 31,42 x 2,62 | AFI 51 3/4"         |
| 1"              | 51         | 180                  | 10,5 | 68 | 27 | 43 | 12 | 62 | 4                      | M 10 x 25             | 31,42 x 2,62 | AFI 51 1"           |
| 3/4"            | 56         | 180                  | 10,5 | 73 | 27 | 43 | 12 | 62 | 4                      | M 10 x 25             | 37,77 x 2,62 | AFI 56 3/4"         |
| 1"              | 56         | 180                  | 10,5 | 73 | 27 | 43 | 12 | 62 | 4                      | M 10 x 25             | 37,77 x 2,62 | AFI 56 1"           |

\*: Nicht galvanisiert / not galvanized

## Verbindungsflansch, gerade, Außengewinde

### Straight connectors male thread



Diese Anschlussflansche werden zum Verbinden von Pumpen und Motoren mit den weiterführenden Bauteilen, wie z. B. Schläuche oder Rohrleitungen, benutzt.

Material der Flansche:  
 11SMnPb37 EN10277-3:1999  
 Oberfläche verzinkt  
 ISO 2081- 4520

Im Lieferumfang enthalten:  
 4 x Schrauben DIN 912,  
 Festigkeitsklasse 8.8  
 4 x Federring DIN 7980  
 1 x Dichtring (O-Ring) NBR

These flanges are used to connect pumps and motors with the secondary components, such as hoses or pipes.

Material of the flanges:  
 11SMnPb37 EN10277-3: 1999  
 Surface Galvanization  
 ISO 2081- 4520

The scope of delivery will include:  
 4 x screws DIN 912, stability 8.8  
 4 x washer DIN 7980  
 1 x sealing ring (O-Ring) NBR

| Anschluss<br>a  | Ø LK<br>b  | Max. Druck<br>(bar)  | c    | d  | f    | h  | l  | Befestigung/<br>Löcher | Schrauben/<br>Gewinde | O-Ring       | Matchcode /<br>Code |
|-----------------|------------|----------------------|------|----|------|----|----|------------------------|-----------------------|--------------|---------------------|
| Connection<br>a | Ø dBC<br>b | Max. Press.<br>(bar) | c    | d  | f    | h  | l  | Holes                  | Metric<br>screws      | O-Ring       | Matchcode /<br>Code |
| 3/8"            | 26         | 250                  | 5,5  | 39 | 11   | 10 | 32 | 4                      | M 5 x 20              | 14,00 x 1,78 | AD 26 3/8"          |
| 3/8"            | 30         | 250                  | 6,5  | 44 | 11   | 10 | 40 | 4                      | M 6 x 20              | 15,88 x 2,62 | AD 30 3/8"          |
| 1/2"            | 30         | 250                  | 6,5  | 44 | 12   | 10 | 40 | 4                      | M 6 x 20              | 15,88 x 2,62 | AD 30 1/2"          |
| 3/8"            | 35         | 250                  | 6,5  | 48 | 11   | 10 | 40 | 4                      | M 6 x 20              | 18,72 x 2,62 | AD 35 3/8"          |
| 1/2"            | 35         | 250                  | 6,5  | 48 | 11   | 10 | 40 | 4                      | M 6 x 20              | 18,72 x 2,62 | AD 35 1/2"          |
| 1/2"            | 40         | 250                  | 8,5  | 51 | 13,5 | 12 | 42 | 4                      | M 8 x 25              | 23,81 x 2,62 | AD 40 1/2"          |
| 3/4"            | 40         | 250                  | 8,5  | 51 | 19   | 12 | 42 | 4                      | M 8 x 25              | 23,81 x 2,62 | AD 40 3/4"          |
| 3/4"            | 40         | 250                  | 8,5  | 51 | 19   | 12 | 42 | 4                      | M 8 x 25              | 25,12 x 1,78 | AD 40/23,5 3/4      |
| 1"              | 40         | 250                  | 8,5  | 51 | 19   | 12 | 44 | 4                      | M 8 x 25              | 23,81 x 2,62 | AD 40 1"            |
| 3/4"            | 51         | 180                  | 10,5 | 68 | 27   | 12 | 43 | 4                      | M 10 x 25             | 31,42 x 2,62 | AD 51 3/4"          |
| 1"              | 51         | 180                  | 10,5 | 68 | 27   | 12 | 43 | 4                      | M 10 x 25             | 31,42 x 2,62 | AD 51 1"            |
| 1-1/4"          | 51         | 180                  | 10,5 | 68 | 27   | 12 | 53 | 4                      | M 10 x 25             | 31,42 x 2,62 | AD 1-1/4"           |
| 3/4"            | 56         | 180                  | 10,5 | 73 | 34   | 12 | 43 | 4                      | M 10 x 25             | 37,77 x 2,62 | AD 56 3/4"          |
| 1"              | 56         | 180                  | 10,5 | 73 | 34   | 12 | 43 | 4                      | M 10 x 25             | 37,77 x 2,62 | AD 56 1"            |
| 1-1/4"          | 56         | 180                  | 10,5 | 73 | 34   | 12 | 53 | 4                      | M 10 x 25             | 37,77 x 2,62 | AD 56 1-1/4"        |



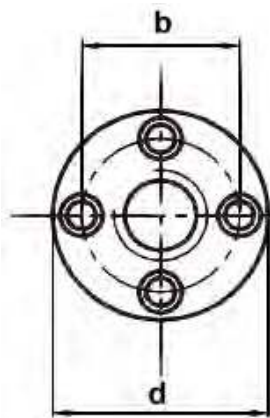
## Verbindungsflansch, gerade, Außengewinde

### Straight connectors male thread

|        |      |     |      |     |    |    |    |   |           |              |                |
|--------|------|-----|------|-----|----|----|----|---|-----------|--------------|----------------|
| 1"     | 62   | 180 | 10,5 | 78  | 24 | 13 | 47 | 4 | M 10 x 25 | 37,69 x 3,53 | AD 62 1"       |
| 1-1/4" | 62   | 180 | 10,5 | 78  | 33 | 13 | 47 | 4 | M 10 x 25 | 37,69 x 3,53 | AD 62 1-1/4"   |
| 1-1/2" | 72,5 | 100 | 12,5 | 89  | 33 | 14 | 49 | 4 | M 12 x 30 | 49,21 x 3,53 | AD 72,5 1-1/2" |
| 1-1/4" | 72,5 | 100 | 12,5 | 89  | 38 | 14 | 49 | 4 | M 12 x 30 | 49,21 x 3,53 | AD 72,5 1-1/4" |
| 2"     | 92   | 100 | 12,5 | 114 | 50 | 18 | 60 | 4 | M 12 x 40 | 69,85 x 3,53 | AD 92 2"       |
| 2-1/2" | 92   | 100 | 12,5 | 114 | 63 | 18 | 60 | 4 | M 12 x 40 | 69,85 x 3,53 | AD 92 2-1/2"   |

\*: Nicht galvanisiert / not galvanized

**Verbindungsflansch, gerade, anschweißbare Version**  
**Straight connectors, welding version**



Diese Anschlussflansche werden zum Verbinden von Pumpen und Motoren mit den weiterführenden Bauteilen, wie z. B. Schläuche oder Rohrleitungen, benutzt.

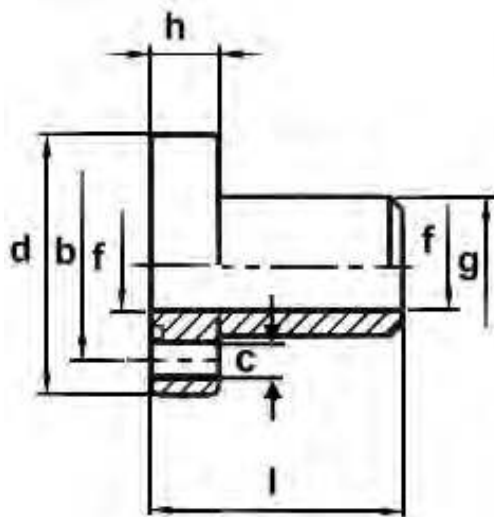
Material der Flansche:  
11SMnPb37 EN10277-3:1999  
Ohne Verzinkung

Im Lieferumfang enthalten:  
4 x Schrauben DIN 912,  
Festigkeitsklasse 8.8  
4 x Federring DIN 7980  
1 x Dichtring (O-Ring) NBR

These flanges are used to connect pumps and motors with the secondary components, such as hoses or pipes.

Material of the flanges:  
11SMnPb37 EN10277-3: 1999  
Without surface Galvanization

The scope of delivery will include:  
4 x screws DIN 912, stability 8.8  
4 x washer DIN 7980  
1 x sealing ring (O-Ring) NBR

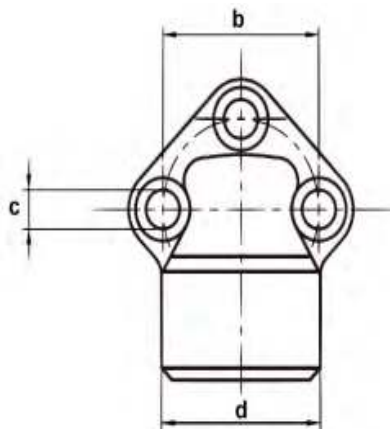


**Verbindungsflansch, gerade, anschweißbare Version**  
**Straight connectors, welding version**

| Anschluss<br>g  | Ø LK<br>b  | Max. Druck<br>(bar)  | c    | d  | f  | h  | l  | Befestigung/<br>Löcher | Schrauben/<br>Gewinde | O-Ring       | Matchcode /<br>Code |
|-----------------|------------|----------------------|------|----|----|----|----|------------------------|-----------------------|--------------|---------------------|
| Connection<br>g | Ø dBC<br>b | Max. Press.<br>(bar) | c    | d  | f  | h  | l  | Holes                  | Metric<br>screws      | O-Ring       | Matchcode /<br>Code |
| 19              | 30         | 180                  | 6,5  | 44 | 12 | 10 | 40 | 4                      | M 6 x 20              | 15,88 x 2,62 | AFS 30*             |
| 25              | 40         | 180                  | 8,5  | 51 | 19 | 12 | 42 | 4                      | M 8 x 25              | 23,81 x 2,62 | AFS 40*             |
| 32              | 51         | 100                  | 10,5 | 68 | 24 | 12 | 42 | 4                      | M 10 x 25             | 31,42 x 2,62 | AFS 51*             |
| 32              | 56         | 100                  | 10,5 | 73 | 27 | 12 | 42 | 4                      | M 10 x 25             | 37,77 x 2,62 | AFS 56*             |

\*: Nicht galvanisiert / not galvanized

**3-Loch-Flansch für Pumpen und Motoren, Winkel 90°**  
**Elbow Coupling, 90°**



Diese Anschlussflansche werden zum Verbinden von Pumpen und Motoren mit den weiterführenden Bauteilen, wie z. B. Schläuche oder Rohrleitungen, benutzt.

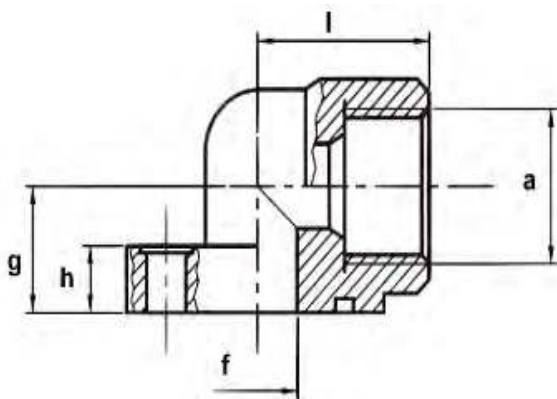
Material der Flansche:  
11SMnPb37 EN10277-3:1999  
Oberfläche verzinkt  
ISO 2081- 4520

Im Lieferumfang enthalten:  
3 x Schrauben DIN 912,  
Festigkeitsklasse 8.8  
3 x Federring DIN 7980  
1 x Dichtring (O-Ring) NBR

These flanges are used to connect pumps and motors with the secondary components, such as hoses or pipes.

Material of the flanges:  
11SMnPb37 EN10277-3: 1999  
Surface Galvanization  
ISO 2081- 4520

The scope of delivery will include:  
3 x screws DIN 912, stability 8.8  
3 x washer DIN 7980  
1 x sealing ring (O-Ring) NBR



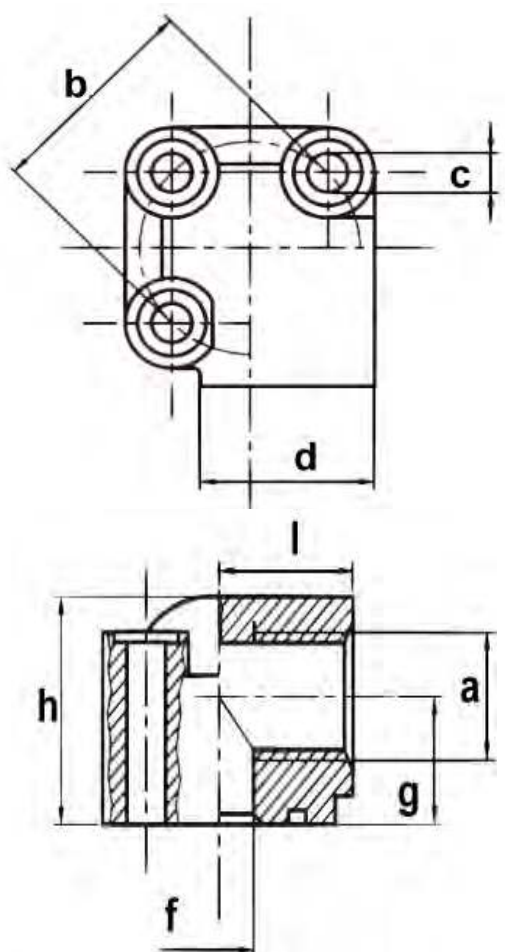
| Anschluss<br>a  | Ø LK<br>b  | Max. Druck<br>(bar)  | c    | d    | f    | g  | h    | l  | Befestigung/<br>Löcher | Schrauben/<br>Gewinde | O-Ring       | Matchcode /<br>Code |
|-----------------|------------|----------------------|------|------|------|----|------|----|------------------------|-----------------------|--------------|---------------------|
| Connection<br>a | Ø dBC<br>b | Max. Press.<br>(bar) | c    | d    | f    | g  | h    | l  | Holes                  | Metric<br>screws      | O-Ring       | Matchcode /<br>Code |
| 3/8"            | 26         | 300                  | 5,5  | 30,5 | 11,5 | 18 | 9,5  | 27 | 3                      | M 5 x 20              | 14,00 x 1,78 | AG 26 3/8"          |
| 1/2"            | 26         | 300                  | 5,5  | 30,5 | 11,5 | 18 | 9,5  | 27 | 3                      | M 5 x 20              | 14,00 x 1,78 | AG 26 1/2"          |
| M 18 x 1,5      | 26         | 300                  | 5,5  | 30,5 | 11,5 | 18 | 9,5  | 27 | 3                      | M 5 x 20              | 14,00 x 1,78 | AG 26 M18x1,5       |
| 3/8"            | 30         | 300                  | 6,5  | 30,5 | 11,5 | 18 | 9,5  | 27 | 3                      | M 6 x 20              | 15,88 x 2,62 | AG 30 3/8"          |
| 1/2"            | 30         | 300                  | 6,5  | 30,5 | 11,5 | 18 | 9,5  | 27 | 3                      | M 6 x 20              | 15,88 x 2,62 | AG 30 1/2"          |
| M 18 x 1,5      | 30         | 300                  | 6,5  | 30,5 | 11,5 | 18 | 9,5  | 27 | 3                      | M 6 x 20              | 15,88 x 2,62 | AG 30 M18x1,5       |
| 3/8"            | 40         | 300                  | 8,5  | 40   | 20   | 21 | 10,5 | 38 | 3                      | M 8 x 25              | 23,81 x 2,62 | AG 40 3/8"          |
| 1/2"            | 40         | 300                  | 8,5  | 40   | 20   | 21 | 10,5 | 38 | 3                      | M 8 x 25              | 23,81 x 2,62 | AG 40 1/2"          |
| 3/4"            | 40         | 300                  | 8,5  | 40   | 20   | 21 | 10,5 | 38 | 3                      | M 8 x 25              | 23,81 x 2,62 | AG 40 3/4"          |
| 1/2"            | 40         | 300                  | 8,5  | 40   | 23,5 | 21 | 10,5 | 38 | 3                      | M 8 x 25              | 25,12 x 1,78 | AG 40/23,5 1/2"     |
| 3/4"            | 40         | 300                  | 8,5  | 40   | 23,5 | 21 | 10,5 | 38 | 3                      | M 8 x 25              | 25,12 x 1,78 | AG 40/23,5 3/4"     |
| 3/4"            | 51         | 300                  | 10,5 | 45   | 25   | 27 | 13,5 | 47 | 3                      | M 10 x 30             | 31,42 x 2,62 | AG 51 3/4"          |
| 1"              | 51         | 300                  | 10,5 | 45   | 25   | 27 | 13,5 | 47 | 3                      | M 10 x 30             | 31,42 x 2,62 | AG 51 1"            |

## 3-Loch-Flansch für Pumpen und Motoren, Winkel 90° Elbow Coupling, 90°

| Anschluss<br>a  | Ø LK<br>b  | Max. Druck<br>(bar)  | c     | d  | f  | g  | h    | l  | Befestigung/<br>Löcher | Schrauben/<br>Gewinde | O-Ring       | Matchcode /<br>Code |
|-----------------|------------|----------------------|-------|----|----|----|------|----|------------------------|-----------------------|--------------|---------------------|
| Connection<br>a | Ø dBC<br>b | Max. Press.<br>(bar) | c     | d  | f  | g  | h    | l  | Holes                  | Metric<br>screws      | O-Ring       | Matchcode /<br>Code |
| 3/4"            | 56         | 300                  | 10,5  | 45 | 34 | 27 | 13,5 | 47 | 3                      | M 10 x 30             | 37,77 x 2,62 | AG 56 3/4"          |
| 1"              | 56         | 300                  | 10,5  | 45 | 34 | 27 | 13,5 | 47 | 3                      | M 10 x 30             | 37,77 x 2,62 | AG 56 1"            |
| 1"              | 62         | 300                  | 10,5  | 60 | 36 | 36 | 19   | 56 | 3                      | M 10 x 35             | 41,28 x 3,53 | AG 62 1"            |
| 1-1/4"          | 62         | 300                  | 10,5  | 60 | 36 | 36 | 19   | 56 | 3                      | M 10 x 35             | 41,28 x 3,53 | AG 62 1-1/4"        |
| 1"              | 62         | 300                  | 12,5  | 60 | 26 | 36 | 19   | 56 | 3                      | M 12 x 35             | 41,28 x 3,53 | AG 62 1" M12        |
| 1-1/4"          | 62         | 300                  | 12,5  | 60 | 36 | 36 | 19   | 56 | 3                      | M 12 x 35             | 41,28 x 3,53 | AG 62 1-1/4" M12    |
| 1-1/4"          | 72,5       | 300                  | 12,5  | 62 | 38 | 38 | 16   | 58 | 3                      | M 12 x 35             | 47,22 x 3,53 | AG 72,5 1-1/4"      |
| 1-1/2"          | 72,5       | 300                  | 122,5 | 62 | 38 | 38 | 16   | 58 | 3                      | M 12 x 35             | 47,22 x 3,53 | AG 72,5 1-1/2"      |
| 2-1/2"          | 92         | 10                   | 12,5  | 95 | 63 | 50 | 21   | 75 | 3                      | M 12 x 40             | 69,85 x 3,53 | AG 92 2-1/2" *      |

\*Material: Gusseisen / material: Cast Iron

## 3-Loch-Sonderflansch für Pumpen und Motoren Elbow Coupling special flange



Diese Anschlussflansche werden zum Verbinden von Pumpen und Motoren mit den weiterführenden Bauteilen, wie z. B. Schläuche oder Rohrleitungen, benutzt.

Material der Flansche:  
 11SMnPb37 EN10277-3:1999  
 Oberfläche verzinkt  
 ISO 2081- 4520

Im Lieferumfang enthalten:  
 3 x Schrauben DIN 912,  
 Festigkeitsklasse 8.8  
 3 x Federring DIN 7980  
 1 x Dichtring (O-Ring) NBR

These flanges are used to connect pumps and motors with the secondary components, such as hoses or pipes.

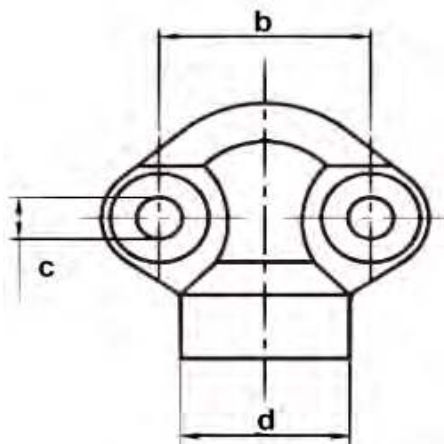
Material of the flanges:  
 11SMnPb37 EN10277-3: 1999  
 Surface Galvanization  
 ISO 2081- 4520

The scope of delivery will include:  
 3 x screws DIN 912, stability 8.8  
 3 x washer DIN 7980  
 1 x sealing ring (O-Ring) NBR

| Anschluss<br>a  | Ø LK<br>b  | Max. Druck<br>(bar)  | c   | d  | f  | g  | h  | l  | Befestigung/<br>Löcher | Schrauben/<br>Gewinde | O-Ring       | Matchcode /<br>Code |
|-----------------|------------|----------------------|-----|----|----|----|----|----|------------------------|-----------------------|--------------|---------------------|
| Connection<br>a | Ø dBC<br>b | Max. Press.<br>(bar) | c   | d  | f  | g  | h  | l  | Holes                  | Metric<br>screws      | O-Ring       | Matchcode /<br>Code |
| 3/8"            | 30         | 250                  | 6,5 | 29 | 12 | 17 | 31 | 23 | 3                      | M 6 x 40              | 15,88 x 2,62 | AT 30 3/8"          |
| 1/2"            | 30         | 250                  | 6,5 | 29 | 12 | 17 | 31 | 23 | 3                      | M 6 x 40              | 15,88 x 2,62 | AT 30 1/2"          |
| M18 x 1,5       | 30         | 250                  | 6,5 | 29 | 12 | 17 | 31 | 23 | 3                      | M 6 x 40              | 15,88 x 2,62 | AT 30 M18 x 1,5     |



## 2-Loch-Flansch für Pumpen und Motoren Elbow Coupling



Diese Anschlussflansche werden zum Verbinden von Pumpen und Motoren mit den weiterführenden Bauteilen, wie z. B. Schläuche oder Rohrleitungen, benutzt.

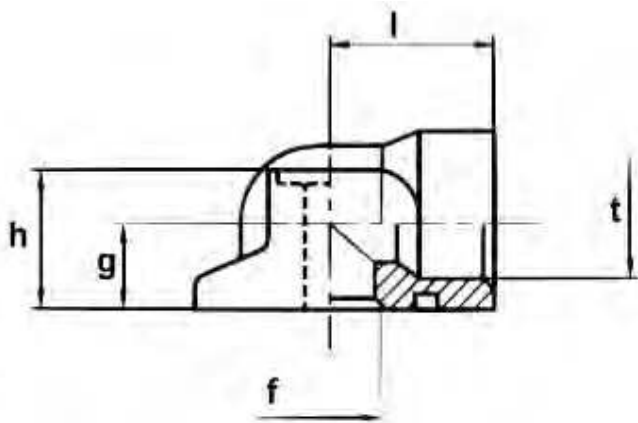
Material der Flansche:  
11SMnPb37 EN10277-3:1999  
Oberfläche verzinkt  
ISO 2081- 4520

Im Lieferumfang enthalten:  
2 x Schrauben DIN 912 ,  
Festigkeitsklasse 8.8  
2 x Federring DIN 7980  
1 x Dichtring (O-Ring) NBR

These flanges are used to connect pumps and motors with the secondary components, such as hoses or pipes.

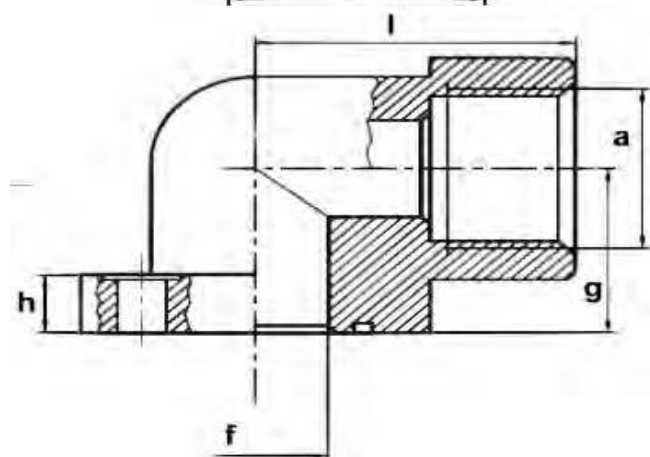
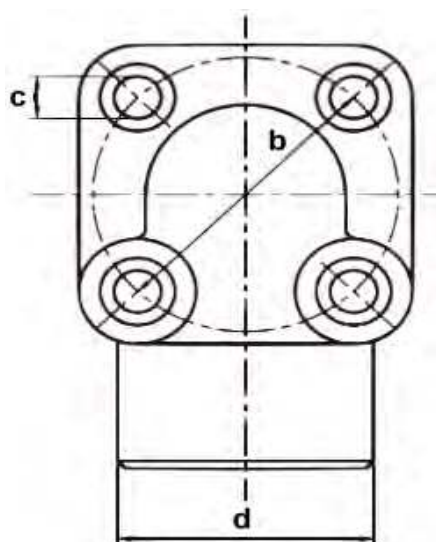
Material of the flanges:  
11SMnPb37 EN10277-3: 1999  
Surface Galvanization  
ISO 2081- 4520

The scope of delivery will include:  
2 x screws DIN 912, stability 8.8  
2 x washer DIN 7980  
1 x sealing ring (O-Ring) NBR



| Anschluss<br>t  | Ø LK<br>b  | Max. Druck<br>(bar)  | c   | d  | f  | g  | h  | l  | Befestigung/<br>Löcher | Schrauben/<br>Gewinde | O-Ring       | Matchcode /<br>Code |
|-----------------|------------|----------------------|-----|----|----|----|----|----|------------------------|-----------------------|--------------|---------------------|
| Connection<br>t | Ø dBC<br>b | Max. Press.<br>(bar) | c   | d  | f  | g  | h  | l  | Holes                  | Metric<br>screws      | O-Ring       | Matchcode /<br>Code |
| 10              | 30         | 300                  | 6,5 | 25 | 12 | 12 | 18 | 22 | 2                      | M 6 x 30              | 15,88 x 2,62 | AF2 30 t10          |
| 11              | 30         | 300                  | 6,5 | 25 | 12 | 12 | 18 | 22 | 2                      | M 6 x 30              | 15,88 x 2,62 | AF2 30 t11          |
| 12              | 30         | 300                  | 6,5 | 25 | 12 | 12 | 18 | 22 | 2                      | M 6 x 30              | 15,88 x 2,62 | AF2 30 t12          |
| 13              | 30         | 300                  | 6,5 | 25 | 12 | 12 | 18 | 22 | 2                      | M 6 x 30              | 15,88 x 2,62 | AF2 30 t13          |
| 14              | 30         | 300                  | 6,5 | 25 | 12 | 12 | 18 | 22 | 2                      | M 6 x 30              | 15,88 x 2,62 | AF2 30 t14          |
| 15              | 30         | 300                  | 6,5 | 25 | 12 | 12 | 18 | 22 | 2                      | M 6 x 30              | 15,88 x 2,62 | AF2 30 t15          |
| 16              | 30         | 300                  | 6,5 | 25 | 12 | 12 | 18 | 22 | 2                      | M 6 x 30              | 15,88 x 2,62 | AF2 30 t16          |
| 3/8"            | 30         | 300                  | 6,5 | 25 | 12 | 12 | 18 | 22 | 2                      | M 6 x 30              | 15,88 x 2,62 | AF2 30 3/8"         |

**4-Loch-Flansch mit Innengewinde, Winkel 90°**  
**Elbow Coupling, 90°, female thread**



Diese Anschlussflansche werden zum Verbinden von Pumpen und Motoren mit den weiterführenden Bauteilen, wie z. B. Schläuche oder Rohrleitungen, benutzt.

Material der Flansche:

ASTM – A105  
Oberfläche verzinkt  
ISO 2081- 4520

Im Lieferumfang enthalten:

4 x Schrauben DIN 912,  
Festigkeitsklasse 8.8  
4 x Federring DIN 7980  
1 x Dichtring (O-Ring) NBR

These flanges are used to connect pumps and motors with the secondary components, such as hoses or pipes.

Material of the flanges:

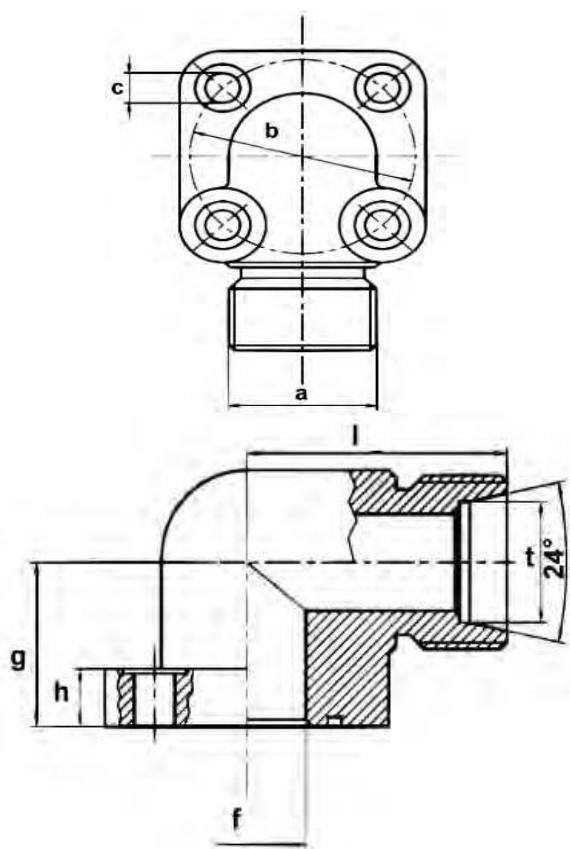
ASTM – A105  
Surface Galvanization  
ISO 2081- 4520

The scope of delivery will include:

4 x screws DIN 912, stability 8.8  
4 x washer DIN 7980  
1 x sealing ring (O-Ring) NBR

| Anschluss<br>a  | Ø LK<br>b  | Max. Druck<br>(bar)  | c   | d  | f    | g  | h  | l  | Befestigung/<br>Löcher | Schrauben/<br>Gewinde  | O-Ring       | Matchcode /<br>Code |
|-----------------|------------|----------------------|-----|----|------|----|----|----|------------------------|------------------------|--------------|---------------------|
| Connection<br>a | Ø dBC<br>b | Max. Press.<br>(bar) | c   | d  | f    | g  | h  | l  | Holes                  | Metric<br>screws       | O-Ring       | Matchcode /<br>Code |
| 3/8"            | 30         | 300                  | 6,5 | 34 | 12   | 19 | 11 | 41 | 4                      | M 6 x 20 /<br>M 6 x 35 | 15,88 x 2,62 | AGB 30 3/8"         |
| 1/2"            | 30         | 300                  | 6,5 | 34 | 12   | 19 | 11 | 41 | 4                      |                        | 15,88 x 2,62 | AGB 30 1/2"         |
| M 18 x 1,5      | 30         | 300                  | 6,5 | 34 | 12   | 19 | 11 | 41 | 4                      | M 6 x 20 /<br>M 6 x 35 | 15,88 x 2,62 | AGB 30 M18x1,5      |
| 3/8"            | 35         | 300                  | 6,5 | 32 | 13,5 | 18 | 11 | 40 | 4                      |                        | 18,72 x 2,62 | AGB 35 3/8"         |
| 1/2"            | 35         | 300                  | 6,5 | 32 | 13,5 | 18 | 11 | 40 | 4                      | M 6 x 20 /<br>M 6 x 35 | 18,72 x 2,62 | AGB 35 1/2"         |
| M 18 x 1,5      | 35         | 300                  | 6,5 | 32 | 13,5 | 18 | 11 | 40 | 4                      |                        | 18,72 x 2,62 | AGB 35 M18x1,5      |
| 1/2"            | 40         | 300                  | 6,5 | 35 | 20   | 24 | 10 | 45 | 4                      | M 6 x 25 /<br>M 6 x 45 | 23,81 x 2,62 | AGB 40 1/2"         |
| 3/4"            | 40         | 300                  | 6,5 | 35 | 20   | 24 | 10 | 45 | 4                      |                        | 23,81 x 2,62 | AGB 40 3/4"         |
| M 18 x 1,5      | 40         | 300                  | 6,5 | 35 | 20   | 24 | 10 | 45 | 4                      | M 6 x 25 /<br>M 6 x 45 | 23,81 x 2,62 | AGB 40 M18x1,5      |
| 3/4"            | 55         | 250                  | 8,5 | 46 | 25   | 35 | 13 | 54 | 4                      |                        | M 8 x 25     | 29,75 x 3,53        |
| 1"              | 55         | 250                  | 8,5 | 46 | 25   | 35 | 13 | 54 | 4                      | M 8 x 60               | 29,75 x 3,53 | AGB 55 1"           |

## 4-Loch-Flansch, Außengewinde, Winkel 90° Elbow Coupling, 90°, male thread



Diese Anschlussflansche werden zum Verbinden von Pumpen und Motoren mit den weiterführenden Bauteilen, wie z. B. Schläuche oder Rohrleitungen, benutzt.

Material der Flansche:

ASTM – A105  
 Oberfläche verzinkt  
 ISO 2081- 4520

Im Lieferumfang enthalten:

4 x Schrauben DIN 912,  
 Festigkeitsklasse 8.8  
 4 x Federring DIN 7980  
 1 x Dichtring (O-Ring) NBR

These flanges are used to connect pumps and motors with the secondary components, such as hoses or pipes.

Material of the flanges:

ASTM – A105  
 Surface Galvanization  
 ISO 2081- 4520

The scope of delivery will include:

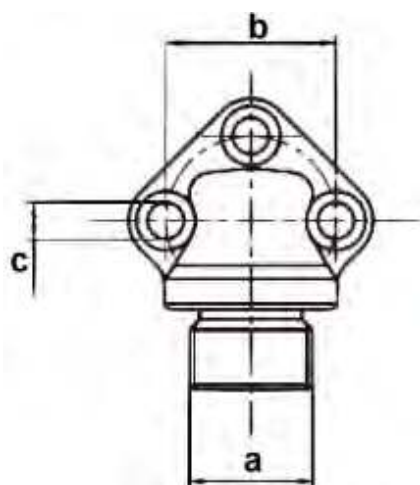
4 x screws DIN 912, stability 8.8  
 4 x washer DIN 7980  
 1 x sealing ring (O-Ring) NBR

| Anschluss<br>a  | Ø LK<br>b  | Max. Druck<br>(bar)  | c   | f    | g  | h  | l  | t  | Befestigung/<br>Löcher | Schrauben/<br>Gewinde   | O-Ring       | Matchcode /<br>Code |
|-----------------|------------|----------------------|-----|------|----|----|----|----|------------------------|-------------------------|--------------|---------------------|
| Connection<br>a | Ø dBC<br>b | Max. Press.<br>(bar) | c   | f    | g  | h  | l  | t  | Holes                  | Metric<br>screws        | O-Ring       | Matchcode /<br>Code |
| M 16 x 1,5      | 30         | 300                  | 6,5 | 12   | 19 | 11 | 41 | 10 | 4                      | M6 x M 20 /<br>M 6 x 35 | 15,88 x 2,62 | ATA 30 t10          |
| M 18 x 1,5      | 30         | 300                  | 6,5 | 12   | 19 | 11 | 41 | 12 | 4                      |                         | 15,88 x 2,62 | ATA 30 t12          |
| M 22 x 1,5      | 30         | 250                  | 6,5 | 12   | 19 | 11 | 41 | 15 | 4                      |                         | 15,88 x 2,62 | ATA 30 t15          |
| M 24 x 1,5      | 30         | 300                  | 6,5 | 12   | 19 | 11 | 41 | 16 | 4                      |                         | 15,88 x 2,62 | ATA 30 t16          |
| M 16 x 1,5      | 35         | 300                  | 6,5 | 13,5 | 18 | 11 | 40 | 10 | 4                      | M 6 x 20 /<br>M 6 x 35  | 18,72 x 2,62 | ATA 35 t10          |
| M 18 x 1,5      | 35         | 300                  | 6,5 | 13,5 | 18 | 11 | 40 | 12 | 4                      |                         | 18,72 x 2,62 | ATA 35 t12          |
| M 22, x 1,5     | 35         | 250                  | 6,5 | 13,5 | 18 | 11 | 40 | 15 | 4                      |                         | 18,72 x 2,62 | ATA 35 t15          |
| M 24 x 1,5      | 35         | 300                  | 6,5 | 13,5 | 18 | 11 | 40 | 16 | 4                      |                         | 18,72 x 2,62 | ATA 35 t16          |
| M 22 x 1,5      | 40         | 100                  | 6,5 | 20   | 24 | 10 | 45 | 15 | 4                      | M 6 x 25 /<br>M 6 x 45  | 23,81 x 2,62 | ATA 40 t15          |
| M 26 x 1,5      | 40         | 100                  | 6,5 | 20   | 24 | 10 | 45 | 18 | 4                      |                         | 23,81 x 2,62 | ATA 40 t18          |
| M 30 x 2        | 40         | 250                  | 6,5 | 20   | 24 | 10 | 45 | 20 | 4                      |                         | 23,81 x 2,62 | ATA 40 t20          |
| M 30 x 2        | 40         | 100                  | 6,5 | 20   | 24 | 10 | 45 | 22 | 4                      |                         | 23,81 x 2,62 | ATA 40 t22          |
| M 36 x 2        | 40         | 100                  | 6,5 | 20   | 24 | 10 | 45 | 28 | 4                      | M 8 x 25 /<br>M 8 x 60  | 23,81 x 2,62 | ATA 40 t28          |
| M 30 x 2        | 55         | 250                  | 8,5 | 25   | 35 | 13 | 54 | 20 | 4                      |                         | 29,75 x 3,53 | ATA 55 t20          |
| M 36 x 2        | 55         | 250                  | 8,5 | 25   | 35 | 13 | 54 | 25 | 4                      |                         | 29,75 x 3,53 | ATA 55 t25          |
| M 42 x 2        | 55         | 250                  | 8,5 | 25   | 35 | 13 | 54 | 30 | 4                      |                         | 29,75 x 3,53 | ATA 55 t30          |

**15 / 40**

Anschlussflansche für Pumpen und Motoren / Artikelgruppe 827  
 Technische Änderungen vorbehalten. 05/2010  
 Technical changes reserved. 05/2010

## 3-Loch-Flansch, 90°, nach Din 3901, mit Außengewinde Elbow Coupling, 90°, DIN 3901, with male thread



Diese Anschlussflansche werden zum Verbinden von Pumpen und Motoren mit den weiterführenden Bauteilen, wie z. B. Schläuche oder Rohrleitungen, benutzt.

Material der Flansche:

ASTM – A105  
 Oberfläche verzinkt  
 ISO 2081- 4520

Im Lieferumfang enthalten:

3 x Schrauben DIN 912,  
 Festigkeitsklasse 8.8  
 3 x Federring DIN 7980  
 1 x Dichtring (O-Ring) NBR

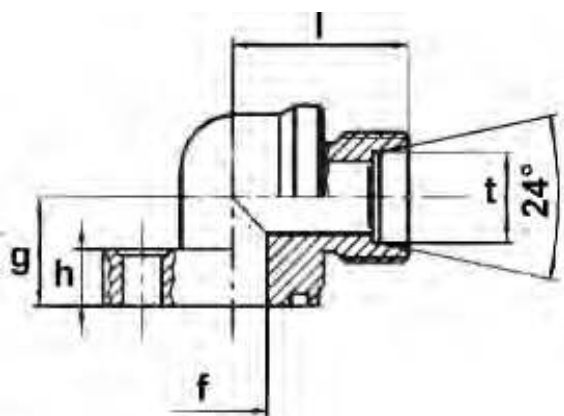
These flanges are used to connect pumps and motors with the secondary components, such as hoses or pipes.

Material of the flanges:

ASTM – A105  
 Surface Galvanization  
 ISO 2081- 4520

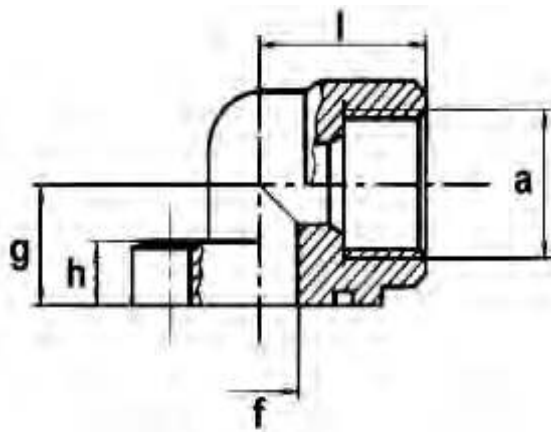
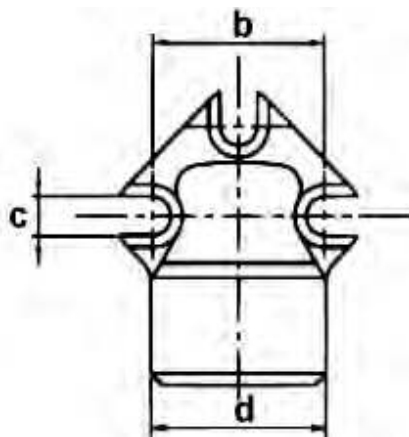
The scope of delivery will include:

3 x screws DIN 912, stability 8.8  
 3 x washer DIN 7980  
 1 x sealing ring (O-Ring) NBR



| Anschluss<br>a  | Ø LK<br>b  | Max. Druck<br>(bar)  | c   | f    | g  | h    | l  | t  | Befestigung/<br>Löcher | Schrauben/<br>Gewinde | O-Ring       | Matchcode /<br>Code |
|-----------------|------------|----------------------|-----|------|----|------|----|----|------------------------|-----------------------|--------------|---------------------|
| Connection<br>a | Ø dBC<br>b | Max. Press.<br>(bar) | c   | f    | g  | h    | l  | t  | Holes                  | Metric<br>screws      | O-Ring       | Matchcode /<br>Code |
| M 16 x 1,5      | 26         | 300                  | 5,5 | 11,5 | 18 | 9,5  | 27 | 10 | 3                      | M 5 x 20              | 14,00 x 1,78 | AGAD26t10           |
| M 18 x 1,5      | 26         | 300                  | 5,5 | 11,5 | 18 | 9,5  | 27 | 12 | 3                      | M 5 x 20              | 14,00 x 1,78 | AGAD26t12           |
| M 22 x 1,5      | 26         | 200                  | 5,5 | 11,5 | 18 | 9,5  | 27 | 15 | 3                      | M 5 x 20              | 14,00 x 1,78 | AGAD26t15           |
| M 24 x 1,5      | 26         | 300                  | 5,5 | 11,5 | 18 | 9,5  | 27 | 16 | 3                      | M 5 x 20              | 14,00 x 1,78 | AGAD26t16           |
| M 16 x 1,5      | 30         | 300                  | 6,5 | 11,5 | 18 | 9,5  | 27 | 10 | 3                      | M 6 x 20              | 15,88 x 2,62 | AGAD30t10           |
| M 18 x 1,5      | 30         | 300                  | 6,5 | 11,5 | 18 | 9,5  | 27 | 12 | 3                      | M 6 x 20              | 15,88 x 2,62 | AGAD30t12           |
| M 22 x 1,5      | 30         | 200                  | 6,5 | 11,5 | 18 | 9,5  | 27 | 15 | 3                      | M 6 x 20              | 15,88 x 2,62 | AGAD30t15           |
| M 24 x 1,5      | 30         | 300                  | 6,5 | 11,5 | 18 | 9,5  | 27 | 16 | 3                      | M 6 x 20              | 15,88 x 2,62 | AGAD30t16           |
| M 22 x 1,5      | 40         | 200                  | 8,5 | 20   | 21 | 10,5 | 38 | 15 | 3                      | M 8 x 25              | 23,81 x 2,62 | AGAD40t15           |
| M 26 x 1,5      | 40         | 100                  | 8,5 | 20   | 21 | 10,5 | 38 | 18 | 3                      | M 8 x 25              | 23,81 x 2,62 | AGAD40t18           |
| M 30 x 2        | 40         | 200                  | 8,5 | 20   | 21 | 10,5 | 38 | 20 | 3                      | M 8 x 25              | 23,81 x 2,62 | AGAD40t20           |
| M 30 x 2        | 40         | 100                  | 8,5 | 20   | 21 | 10,5 | 38 | 22 | 3                      | M 8 x 25              | 23,81 x 2,62 | AGAD40t22           |

**Universal-3-Loch-Flansch mit Innengewinde, 90°  
Elbow Coupling, universal, 90°, with female thread**



Diese Anschlussflansche werden zum Verbinden von Pumpen und Motoren mit den weiterführenden Bauteilen, wie z. B. Schläuche oder Rohrleitungen, benutzt.

Material der Flansche:  
ASTM – A105  
Oberfläche verzinkt  
ISO 2081- 4520

Im Lieferumfang enthalten:  
3 x Schrauben DIN 912,  
Festigkeitsklasse 8.8  
3 x Federring DIN 7980  
1 x Dichtring (O-Ring) NBR

These flanges are used to connect pumps and motors with the secondary components, such as hoses or pipes.

Material of the flanges:  
ASTM – A105  
Surface Galvanization  
ISO 2081- 4520

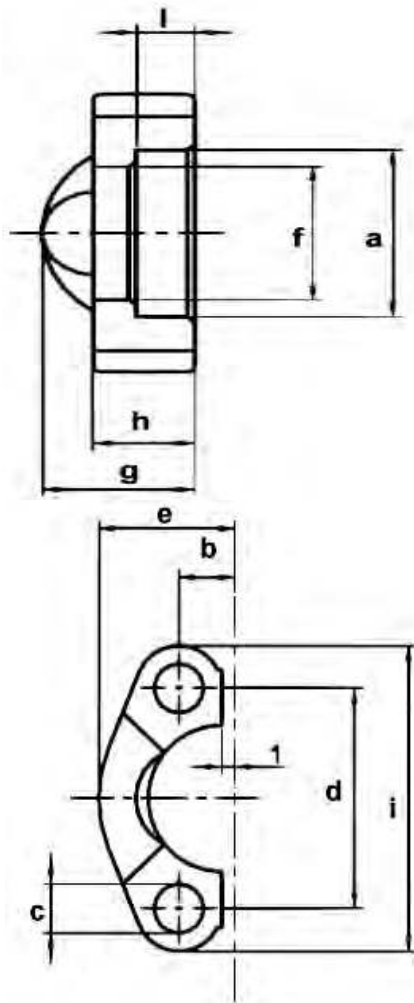
The scope of delivery will include:  
3 x screws DIN 912, stability 8.8  
3 x washer DIN 7980  
1 x sealing ring (O-Ring) NBR

| Anschluss<br>a  | Ø LK<br>b  | Max. Druck<br>(bar)  | c    | d  | f  | g  | h    | l  | Befestigung/<br>Löcher | Schrauben/<br>Gewinde | O-Ring       | Matchcode /<br>Code |
|-----------------|------------|----------------------|------|----|----|----|------|----|------------------------|-----------------------|--------------|---------------------|
| Connection<br>a | Ø dBC<br>b | Max. Press.<br>(bar) | c    | d  | f  | g  | h    | l  | Holes                  | Metric<br>screws      | O-Ring       | Matchcode /<br>Code |
| 3/4"            | 51-56      | 300                  | 10,5 | 45 | 25 | 27 | 13,5 | 47 | 3                      | M 10 x 30             | 31,42 x 2,62 | AGAS 51-56 3/4"     |
| 1"              | 51-56      | 300                  | 10,5 | 45 | 25 | 27 | 13,5 | 47 | 3                      | M 10 x 30             | 31,42 x 2,62 | AGAS 51-56 1"       |



## SAE – Flanschköpfe, Serie 3000 PSI

### SAE Split flange, series 3000 PSI



Diese Flanschköpfe werden zum Verbinden von Pumpen und Motoren mit den weiterführenden Bauteilen, wie z. B. flachdichtende Schläuche oder Rohrleitungen, benutzt.

Material der Flansche:

ST52.3  
 Oberfläche verzinkt  
 ISO 2081- 4520

Im Lieferumfang enthalten:

2 x Schrauben DIN 912,  
 Festigkeitsklasse 8.8  
 2 x Federring DIN7980

These flanges are used to connect pumps and motors with the secondary components, such as hoses (flat seal) or pipes.

Material of the flanges:

ST52.3  
 Surface Galvanization  
 ISO 2081- 4520

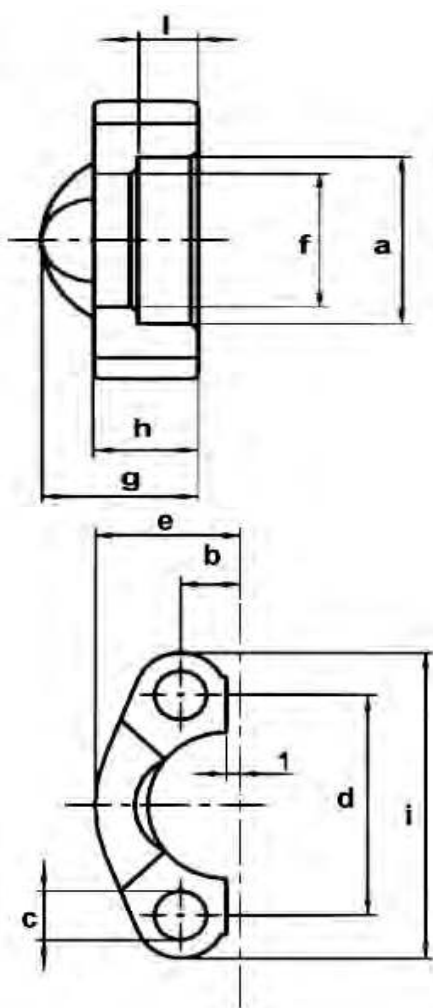
The scope of delivery will include:

2 x screws DIN 912, stability 8.8  
 2 x washer DIN 7980

| Anschluss SAE  | Ø LK d  | Max. Druck (bar)  | a     | b     | c    | e    | f      | g  | h  | i   | l    | Matchcode / Code |
|----------------|---------|-------------------|-------|-------|------|------|--------|----|----|-----|------|------------------|
| Connection SAE | Ø dBC d | Max. Press. (bar) | a     | b     | c    | e    | f      | g  | h  | i   | l    | Matchcode / Code |
| 1/2"           | 31,0    | 210               | 31,0  | 8,70  | 8,75 | 23,0 | 24,3   | 20 | 13 | 54  | 6,2  | ARSF 3012 T      |
| 3/4"           | 47,6    | 210               | 38,9  | 11,1  | 10,5 | 26,0 | 32,1   | 22 | 14 | 65  | 6,2  | ARSF 3034 T      |
| 1"             | 52,4    | 210               | 45,2  | 13,1  | 10,5 | 29,2 | 38,5   | 22 | 16 | 70  | 7,5  | ARSF 3100 T      |
| 1-1/4"         | 58,7    | 210               | 51,6  | 15,1  | 12,0 | 36,3 | 43,7   | 22 | 14 | 80  | 7,5  | ARSF 3114 T      |
| 1-1/2"         | 69,9    | 210               | 61,1  | 17,9  | 13,5 | 41,1 | 50,8   | 24 | 16 | 94  | 7,5  | ARSF 3112 T      |
| 2"             | 77,8    | 210               | 72,2  | 21,4  | 13,5 | 48,2 | 62,7   | 26 | 16 | 102 | 9,0  | ARSF 3200 T      |
| 2-1/2"         | 88,9    | 175               | 84,9  | 25,4  | 13,5 | 54,0 | 74,9   | 38 | 19 | 115 | 9,0  | ARSF 3212 T      |
| 3"             | 106,4   | 138               | 102,4 | 31,0  | 17,0 | 65,3 | 90,9   | 40 | 22 | 135 | 9,0  | ARSF 3300 T      |
| 3-1/2"         | 120,65  | 35                | 115,0 | 34,85 | 17,0 | 70,0 | 102,36 | 45 | 23 | 152 | 10,7 | ARSF 3312 T      |
| 4"             | 130,18  | 35                | 127,8 | 38,9  | 17,0 | 75,0 | 115,11 | 48 | 25 | 160 | 10,7 | ARSF 3400 T      |
| 5"             | 152,4   | 35                | 153,2 | 46,0  | 17,0 | 82,0 | 140,5  | 50 | 28 | 183 | 10,7 | ARSF 3500 T      |

## SAE – Flanschkörper, Serie 6000 PSI

### SAE Split flange, series 6000 PSI



Diese Flanschkörper werden zum Verbinden von Pumpen und Motoren mit den weiterführenden Bauteilen, wie z. B. flachdichtende Schläuche oder Rohrleitungen, benutzt.

#### Material der Flansche:

ST52.3  
 Oberfläche verzinkt  
 ISO 2081- 4520

#### Im Lieferumfang enthalten:

2 x Schrauben DIN 912,  
 Festigkeitsklasse 8.8  
 2 x Federring DIN7980

These flanges are used to connect pumps and motors with the secondary components, such as hoses (flat seal) or pipes.

#### Material of the flanges:

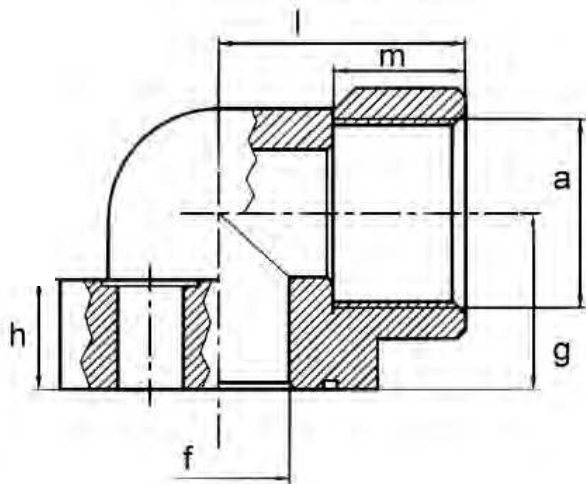
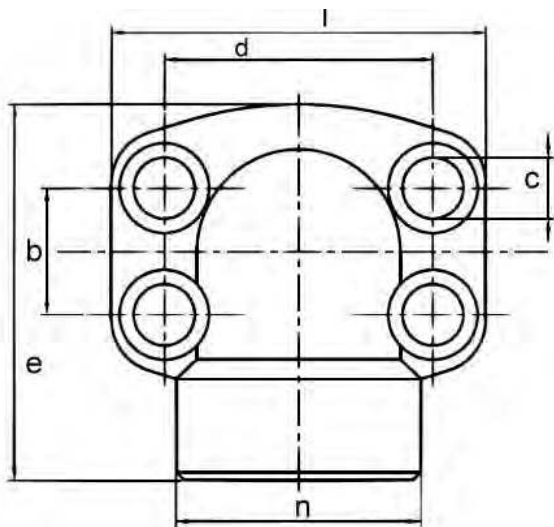
ST52.3  
 Surface Galvanization  
 ISO 2081- 4520

#### The scope of delivery will include:

2 x screws DIN 912, stability 8.8  
 2 x washer DIN 7980

| Anschluss SAE  | Ø LK d  | Max. Druck (bar)  | a     | b     | c    | e  | f     | g  | h  | i   | l    | Matchcode / Code |
|----------------|---------|-------------------|-------|-------|------|----|-------|----|----|-----|------|------------------|
| Connection SAE | Ø dBC d | Max. Press. (bar) | a     | b     | c    | e  | f     | g  | h  | i   | l    | Matchcode / Code |
| 1/2"           | 40,5    | 420               | 32,5  | 9,1   | 8,75 | 24 | 24,6  | 22 | 16 | 57  | 7,2  | ARSF 6012 T      |
| 3/4"           | 50,8    | 420               | 42,0  | 11,9  | 10,5 | 30 | 32,5  | 28 | 19 | 72  | 8,3  | ARSF 6034 T      |
| 1"             | 57,2    | 420               | 48,4  | 13,9  | 13,0 | 35 | 38,9  | 32 | 24 | 81  | 9,0  | ARSF 6100 T      |
| 1-1/4"         | 66,7    | 420               | 54,8  | 15,9  | 15,0 | 39 | 44,5  | 38 | 27 | 96  | 9,8  | ARSF 6114 T      |
| 1-1/2"         | 79,4    | 420               | 64,3  | 18,3  | 17,0 | 48 | 51,6  | 42 | 30 | 113 | 12,1 | ARSF 6112 T      |
| 2"             | 96,8    | 420               | 80,2  | 22,2  | 21,0 | 57 | 67,6  | 52 | 37 | 134 | 12,1 | ARSF 6200 T      |
| 2-1/2"         | 123,8   | 420               | 108,5 | 29,35 | 25,0 | 75 | 89,5  | 48 | 48 | 175 | 20,0 | ARSF 6212 T      |
| 3"             | 152,4   | 420               | 132,5 | 35,7  | 32,0 | 89 | 114,5 | 58 | 58 | 210 | 25,0 | ARSF 6300 T      |

**SAE – 90° Flansch mit Innengewinde, Serie 3000 PSI**  
**SAE flange, 90°, pipe threaded flange, series 3000 PSI**



Diese Anschlussflansche werden zum Verbinden von Pumpen und Motoren mit den weiterführenden Bauteilen, wie z. B. Schläuche oder Rohrleitungen, benutzt.

Material der Flansche:  
ASTM – A105  
Oberfläche verzinkt

Im Lieferumfang enthalten:  
4 x Schrauben DIN 912,  
Festigkeitsklasse 8.8  
4 x Federring DIN7980  
1 x Dichtring (O-Ring) NBR

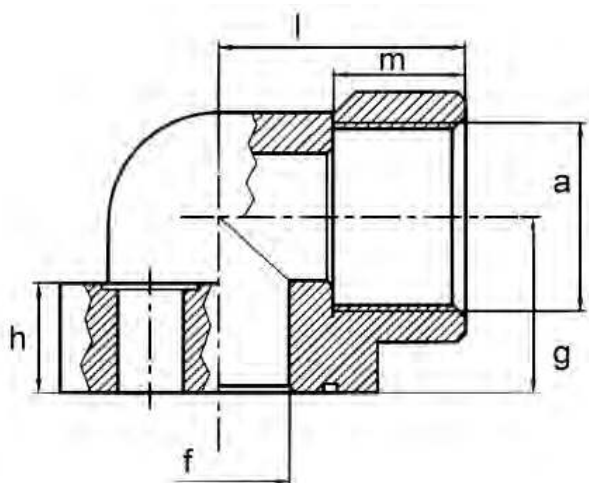
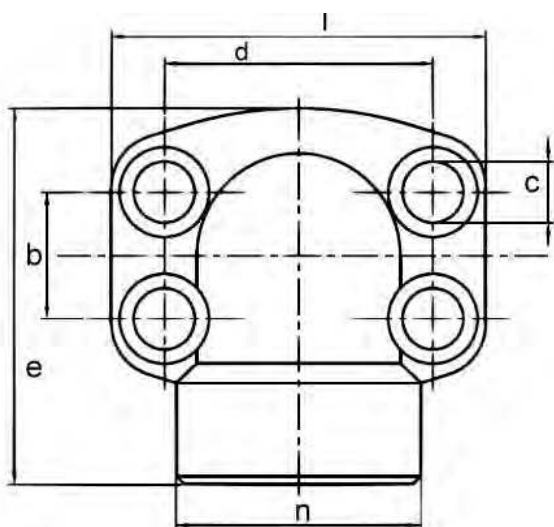
These flanges are used to connect pumps and motors with the secondary components, such as hoses or pipes.

Material of the flanges:  
ASTM – A105  
Surface Galvanization

The scope of delivery will include:  
4 x screws DIN 912, stability 8.8  
4 x washer DIN 7980  
1 x sealing ring (O-Ring) NBR

| S<br>A<br>E | Max. Druck (bar) | a      | b     | c    | d     | e  | f    | g  | h  | i  | l  | m  | n  | Schrauben/<br>Screws |                | O-Ring       | Matchcode / Code  |
|-------------|------------------|--------|-------|------|-------|----|------|----|----|----|----|----|----|----------------------|----------------|--------------|-------------------|
|             | Max. Press (bar) | a      | b     | c    | d     | e  | f    | g  | h  | i  | l  | m  | n  | Metr.                | U.N.C.         | O-Ring       | Matchcode / Code  |
| 1/2"        | 348              | 1/2"   | 17,48 | 8,5  | 38,10 | 59 | 13,5 | 18 | 17 | 57 | 36 | 19 | 31 | M 8 x 30             | 5/16" x 1-1/4" | 18,64 x 3,53 | ARF 90° 3012 G12  |
| 3/4"        | 348              | 3/4"   | 22,23 | 10,5 | 47,63 | 63 | 19   | 22 | 18 | 68 | 38 | 19 | 39 | M 10 x 35            | 3/8" x 1-1/2"  | 24,99 x 3,53 | ARF 90° 3034 G34  |
| 1"          | 348              | 1"     | 26,19 | 10,5 | 52,37 | 68 | 25   | 28 | 19 | 74 | 41 | 19 | 45 | M 10 x 35            | 3/8" x 1-1/2"  | 32,93 x 3,53 | ARF 90° 3100 G100 |
| 1-1/4"      | 279              | 1-1/4" | 30,18 | 11,5 | 58,72 | 84 | 32   | 30 | 22 | 81 | 50 | 22 | 54 | M 10 x 35            | 7/16" x 1-3/4" | 37,69 x 3,53 | ARF 90° 3114 G114 |
| 1-1/2"      | 210              | 1-1/2" | 35,70 | 13,5 | 69,90 | 97 | 38   | 36 | 25 | 95 | 58 | 24 | 63 | M 12 x 45            | 1/2" x 1-3/4"  | 47,22 x 3,53 | ARF 90° 3112 G112 |

**SAE – 90° Flansch mit Innengewinde, Serie 6000 PSI**  
**SAE flange, 90°, pipe threaded flange, series 6000 PSI**



Diese Anschlussflansche werden zum Verbinden von Pumpen und Motoren mit den weiterführenden Bauteilen, wie z. B. Schläuche oder Rohrleitungen, benutzt.

Material der Flansche:

ASTM – A105  
Oberfläche verzinkt

Im Lieferumfang enthalten:

4 x Schrauben DIN 912,  
Festigkeitsklasse 8.8  
4 x Federring DIN7980  
1 x Dichtring (O-Ring) NBR

These flanges are used to connect pumps and motors with the secondary components, such as hoses or pipes.

Material of the flanges:

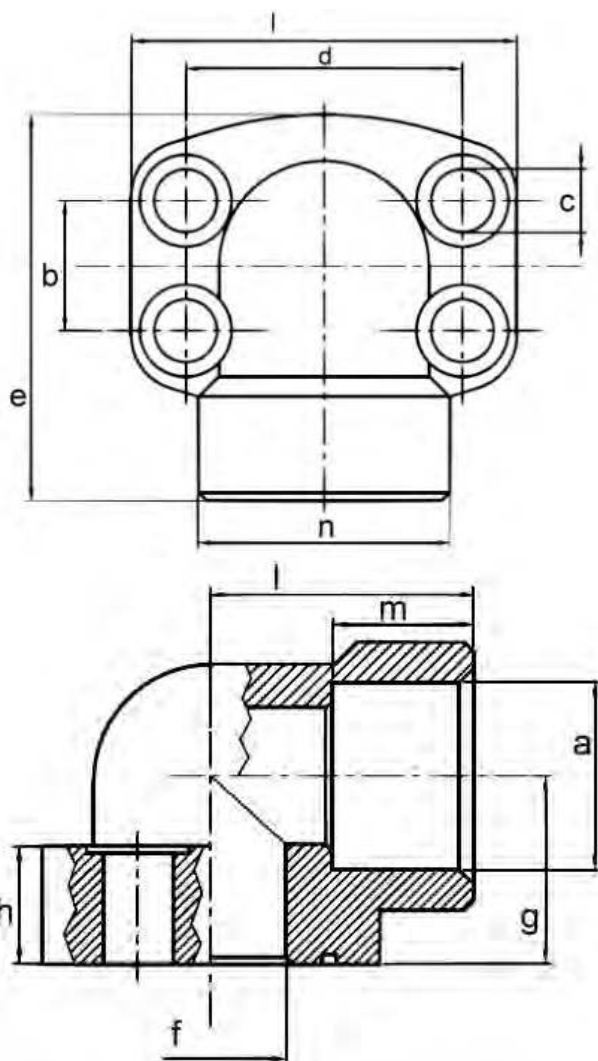
ASTM – A105  
Surface Galvanization

The scope of delivery will include:

4 x screws DIN 912, stability 8.8  
4 x washer DIN 7980  
1 x sealing ring (O-Ring) NBR

| S<br>A<br>E | Max.<br>Druck<br>(bar) | a      | b     | c    | d     | e  | f    | g  | h  | i  | l  | m  | n  | Schrauben/<br>Screws |                   | O-Ring          | Matchcode /<br>Code  |
|-------------|------------------------|--------|-------|------|-------|----|------|----|----|----|----|----|----|----------------------|-------------------|-----------------|----------------------|
|             |                        | a      | b     | c    | d     | e  | f    | g  | h  | i  | l  | m  | n  | Metr.                | U.N.C.            | O-Ring          | Matchcode /<br>Code  |
| 1/2"        | 420                    | 1/2"   | 18,24 | 8,5  | 40,49 | 59 | 13,5 | 18 | 17 | 57 | 36 | 19 | 31 | M 8 x<br>30          | 5/16" x<br>1-1/4" | 18,64 x<br>3,53 | ARF 90°<br>6012 G12  |
| 3/4"        | 420                    | 3/4"   | 23,80 | 10,5 | 50,80 | 68 | 19   | 28 | 20 | 72 | 41 | 22 | 45 | M 10<br>x 35         | 3/8" x<br>1-1/2"  | 24,99 x<br>3,53 | ARF 90°<br>6034 G34  |
| 1"          | 420                    | 1"     | 27,76 | 13   | 57,15 | 84 | 25   | 30 | 24 | 82 | 50 | 24 | 54 | M 12<br>x 45         | 7/16" x<br>1-3/4" | 32,93 x<br>3,53 | ARF 90°<br>6100 G100 |
| 1-<br>1/4"  | 420                    | 1-1/4" | 31,75 | 15   | 66,68 | 97 | 32   | 36 | 25 | 95 | 58 | 25 | 63 | M 14<br>x 45         | 1/2" x<br>1-3/4"  | 37,69 x<br>3,53 | ARF 90°<br>6114 G114 |

**SAE – Einschweißflansch, 90°, Serie 3000 PSI**  
**SAE 90° weld in flange, series 3000 PSI**



Diese Anschlussflansche werden zum Verbinden von Pumpen und Motoren mit den weiterführenden Bauteilen, wie z. B. Schläuche oder Rohrleitungen, benutzt.

Material der Flansche:

ASTM – A105  
Oberfläche blank

Im Lieferumfang enthalten:

4 x Schrauben DIN 912,  
Festigkeitsklasse 8.8  
4 x Federring DIN7980  
1 x Dichtring (O-Ring) NBR

These flanges are used to connect pumps and motors with the secondary components, such as hoses or pipes.

Material of the flanges:

ASTM – A105  
Surface Galvanization

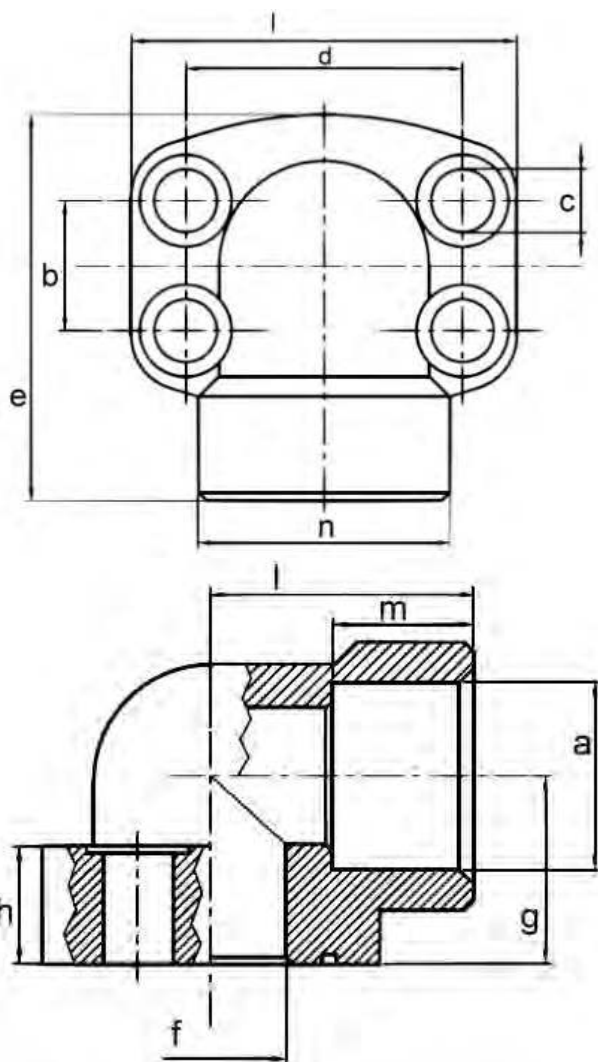
The scope of delivery will include:

4 x screws DIN 912, stability 8.8  
4 x washer DIN 7980  
1 x sealing ring (O-Ring) NBR

| S<br>A<br>E | Max. Druck (bar) | a    | b     | c    | d     | e  | f    | g  | h  | i  | l  | m  | n  | Schrauben/<br>Screws |                | O-Ring       | Matchcode / Code |
|-------------|------------------|------|-------|------|-------|----|------|----|----|----|----|----|----|----------------------|----------------|--------------|------------------|
|             | Max. Press (bar) | a    | b     | c    | d     | e  | f    | g  | h  | i  | l  | m  | n  | Metr.                | U.N.C.         | O-Ring       | Matchcode / Code |
| 1/2"        | 348              | 21,6 | 17,48 | 8,5  | 38,10 | 59 | 13,5 | 18 | 17 | 57 | 36 | 19 | 31 | M 8 x 30             | 5/16" x 1-1/4" | 18,64 x 3,53 | ARF 90° 3012 S   |
| 3/4"        | 348              | 27,2 | 22,23 | 10,5 | 47,63 | 63 | 19   | 22 | 18 | 68 | 38 | 19 | 39 | M 10 x 35            | 3/8" x 1-1/2"  | 24,99 x 3,53 | ARF 90° 3034 S   |
| 1"          | 348              | 34,1 | 26,19 | 10,5 | 52,37 | 68 | 25   | 28 | 19 | 74 | 41 | 19 | 45 | M 10 x 35            | 3/8" x 1-1/2"  | 32,93 x 3,53 | ARF 90° 3100 S   |
| 1-1/4"      | 279              | 42,8 | 30,18 | 11,5 | 58,72 | 84 | 32   | 30 | 22 | 81 | 50 | 22 | 54 | M 10 x 35            | 7/16" x 1-3/4" | 37,69 x 3,53 | ARF 90° 3114 S   |
| 1-1/2"      | 210              | 48,6 | 35,70 | 13,5 | 69,90 | 97 | 38   | 36 | 25 | 95 | 58 | 24 | 63 | M 12 x 45            | 1/2" x 1-3/4"  | 47,22 x 3,53 | ARF 90° 3112 S   |



**SAE – Einschweißflansch, 90°, Serie 6000 PSI**  
**SAE 90° weld in flange, series 6000 PSI**



Diese Anschlussflansche werden zum Verbinden von Pumpen und Motoren mit den weiterführenden Bauteilen, wie z. B. Schläuche oder Rohrleitungen, benutzt.

Material der Flansche:

ASTM – A105  
Oberfläche blank

Im Lieferumfang enthalten:

4 x Schrauben DIN 912,  
Festigkeitsklasse 8.8  
4 x Federring DIN7980  
1 x Dichtring (O-Ring) NBR

These flanges are used to connect pumps and motors with the secondary components, such as hoses or pipes.

Material of the flanges:

ASTM – A105  
Surface blank

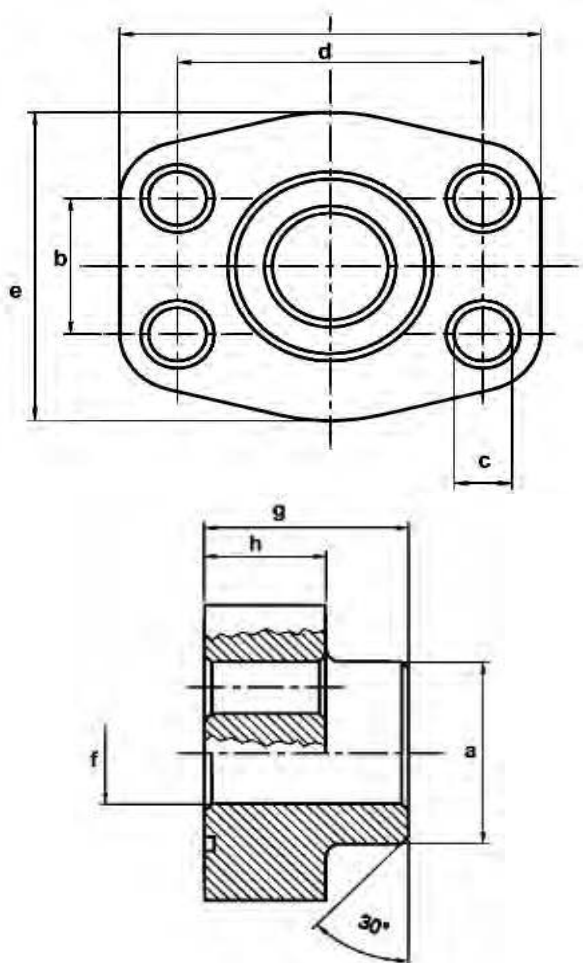
The scope of delivery will include:

4 x screws DIN 912, stability 8.8  
4 x washer DIN 7980  
1 x sealing ring (O-Ring) NBR

| SAE    | Max. Druck (bar) | a                | b     | c    | d     | e  | f    | g  | h  | i  | l  | m  | n  | Schrauben/ Screws |                | O-Ring       | Matchcode / Code |
|--------|------------------|------------------|-------|------|-------|----|------|----|----|----|----|----|----|-------------------|----------------|--------------|------------------|
|        |                  | Max. Press (bar) | a     | b    | c     | d  | e    | f  | g  | h  | i  | l  | m  | n                 | Metr.          | U.N.C.       | O-Ring           |
| 1/2"   | 420              | 21,6             | 18,24 | 8,5  | 40,49 | 59 | 13,5 | 18 | 17 | 57 | 36 | 19 | 31 | M 8 x 30          | 5/16" x 1-1/4" | 18,64 x 3,53 | ARF 90° 6012 S   |
| 3/4"   | 420              | 27,2             | 23,80 | 10,5 | 50,80 | 68 | 19   | 28 | 20 | 72 | 41 | 22 | 45 | M 10 x 35         | 3/8" x 1-1/2"  | 24,99 x 3,53 | ARF 90° 6034 S   |
| 1"     | 420              | 34,1             | 27,76 | 13   | 57,15 | 84 | 25   | 30 | 24 | 82 | 50 | 24 | 54 | M 12 x 45         | 7/16" x 1-3/4" | 32,93 x 3,53 | ARF 90° 6100 S   |
| 1-1/4" | 420              | 42,8             | 31,75 | 15   | 66,68 | 97 | 32   | 36 | 25 | 95 | 58 | 25 | 63 | M 14 x 45         | 1/2" x 1-3/4"  | 37,69 x 3,53 | ARF 90° 6114 S   |

## SAE – Anschweiß-Flansch, Serie 3000 PSI

### SAE weld on flange, series 3000 PSI



Diese Anschlussflansche werden zum Verbinden von Pumpen und Motoren mit den weiterführenden Bauteilen, wie z. B. Schläuche oder Rohrleitungen, benutzt.

Material der Flansche:

ASTM – A105  
 Oberfläche blank

Im Lieferumfang enthalten:

4 x Schrauben DIN 912,  
 Festigkeitsklasse 8.8  
 4 x Federring DIN7980  
 1 x Dichtring (O-Ring) NBR

These flanges are used to connect pumps and motors with the secondary components, such as hoses or pipes.

Material of the flanges:

ASTM – A105  
 Surface blank

The scope of delivery will include:

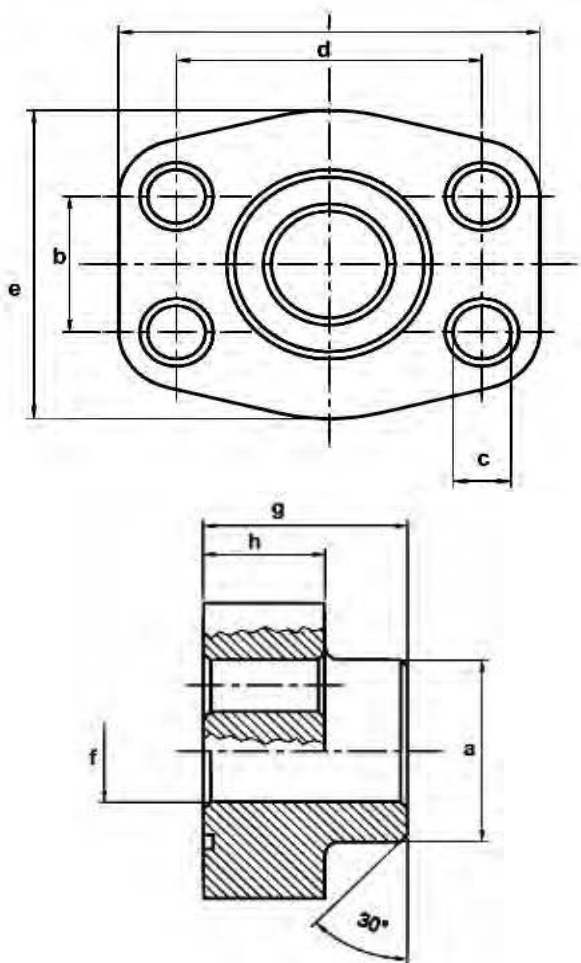
4 x screws DIN 912, stability 8.8  
 4 x washer DIN 7980  
 1 x sealing ring (O-Ring) NBR

| SAE    | Max. Druck (bar) | a    | b     | c    | d      | e   | f  | g  | h  | i   | Schrauben/ Screws |                | O-Ring       | Matchcode/ Code |
|--------|------------------|------|-------|------|--------|-----|----|----|----|-----|-------------------|----------------|--------------|-----------------|
|        | Max. Press (bar) | a    | b     | c    | d      | e   | f  | g  | h  | i   | Metr.             | U.N.C.         | O-Ring       | Matchcode/ Code |
| 3/8"   | 348              | 17,5 | 17,48 | 8,5  | 38,10  | 46  | 13 | 36 | 16 | 55  | M 8 x 30          | 5/16" x 1-1/4" | 18,64 x 3,53 | ARF 3012 ST 38  |
| 1/2"   | 348              | 21,6 | 17,48 | 8,5  | 38,10  | 46  | 13 | 36 | 16 | 55  | M 8 x 30          | 5/16" x 1-1/4" | 18,64 x 3,53 | ARF 3012 ST     |
| 3/4"   | 348              | 27,2 | 22,23 | 10,5 | 47,63  | 51  | 19 | 36 | 18 | 66  | M 10 x 35         | 3/8" x 1-1/2"  | 24,99 x 3,53 | ARF 3034 ST     |
| 1"     | 348              | 34,1 | 26,19 | 10,5 | 52,37  | 56  | 25 | 38 | 21 | 71  | M 10 x 35         | 3/8" x 1-1/2"  | 32,93 x 3,53 | ARF 3100 ST     |
| 1-1/4" | 279              | 42,8 | 30,18 | 11,5 | 58,72  | 68  | 32 | 41 | 25 | 81  | M 10 x 35         | 7/16" x 1-3/4" | 37,69 x 3,53 | ARF 3114 ST     |
| 1-1/2" | 210              | 48,6 | 35,71 | 13,5 | 69,85  | 78  | 38 | 45 | 27 | 95  | M 12 x 45         | 1/2" x 1-3/4"  | 47,22 x 3,53 | ARF 3112 ST     |
| 2"     | 210              | 61,0 | 42,88 | 13,5 | 77,77  | 91  | 51 | 45 | 25 | 102 | M 12 x 45         | 1/2" x 1-3/4"  | 56,74 x 3,53 | ARF 3200 ST     |
| 2-1/2" | 175              | 76,6 | 50,80 | 13,5 | 88,90  | 103 | 63 | 50 | 25 | 114 | M 12 x 45         | 1/2" x 1-3/4"  | 69,44 x 3,53 | ARF3212 ST      |
| 3"     | 138              | 89,0 | 61,93 | 17   | 106,40 | 124 | 73 | 50 | 27 | 135 | M 16 x 55         | 5/8" x 2"      | 85,32 x 3,53 | ARF3300 ST      |

**24 / 40**

Anschlussflansche für Pumpen und Motoren / Artikelgruppe 827  
 Technische Änderungen vorbehalten. 05/2010  
 Technical changes reserved. 05/2010

**SAE – Anschweiß-Flansch, Serie 6000 PSI**  
**SAE weld on flange, series 6000 PSI**



Diese Anschlussflansche werden zum Verbinden von Pumpen und Motoren mit den weiterführenden Bauteilen, wie z. B. Schläuche oder Rohrleitungen, benutzt.

Material der Flansche:

ASTM – A105  
Oberfläche blank

Im Lieferumfang enthalten:

4 x Schrauben DIN 912,  
Festigkeitsklasse 8.8  
4 x Federring DIN7980  
1 x Dichtring (O-Ring) NBR

These flanges are used to connect pumps and motors with the secondary components, such as hoses or pipes.

Material of the flanges:

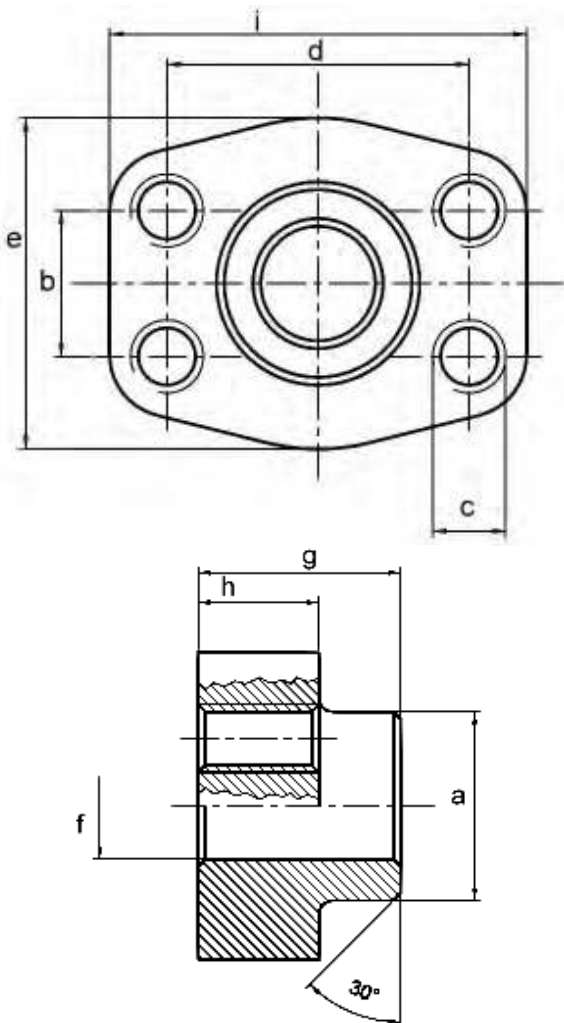
ASTM – A105  
Surface blank

The scope of delivery will include:

4 x screws DIN 912, stability 8.8  
4 x washer DIN 7980  
1 x sealing ring (O-Ring) NBR

| SAE    | Max. Druck (bar) | a    | b     | c    | d     | e  | f  | g  | h  | i   | Schrauben/ Screws |                | O-Ring       | Matchcode / Code |
|--------|------------------|------|-------|------|-------|----|----|----|----|-----|-------------------|----------------|--------------|------------------|
|        | Max. Press (bar) | a    | b     | c    | d     | e  | f  | g  | h  | i   | Metr.             | U.N.C.         | O-Ring       | Matchcode / Code |
| 3/8"   | 420              | 17,5 | 18,24 | 8,5  | 40,49 | 46 | 13 | 36 | 16 | 55  | M 8 x 30          | 5/16" x 1-1/4" | 18,64 x 3,53 | ARF 6012 ST 38   |
| 1/2"   | 420              | 21,6 | 18,24 | 8,5  | 40,49 | 46 | 13 | 36 | 16 | 55  | M 8 x 30          | 5/16" x 1-1/4" | 18,64 x 3,53 | ARF 6012 ST      |
| 3/4"   | 420              | 27,2 | 23,80 | 10,5 | 50,80 | 56 | 19 | 36 | 21 | 71  | M 10 x 35         | 3/8" x 1-1/2"  | 24,99 x 3,53 | ARF 6034 ST      |
| 1"     | 420              | 34,1 | 27,76 | 13   | 57,15 | 68 | 25 | 42 | 25 | 81  | M 12 x 45         | 7/16" x 1-3/4" | 32,93 x 3,53 | ARF 6100 ST      |
| 1-1/4" | 420              | 42,8 | 31,75 | 15   | 66,68 | 78 | 32 | 45 | 27 | 95  | M 14 x 45         | 1/2" x 1-3/4"  | 37,69 x 3,53 | ARF 6114 ST      |
| 1-1/2" | 420              | 48,6 | 36,50 | 17   | 79,38 | 94 | 38 | 51 | 29 | 112 | M 16 x 55         | 5/8" x 2"      | 47,22 x 3,53 | ARF 6112 ST      |

**SAE – Gegenflansch zum Anschweißen, Serie 3000 PSI**  
**SAE weld on counter flange, series 3000 PSI**



Diese Gegenflansche werden zum Verbinden mit SAE-Flanschen mit eingesetztem O-Ring benutzt.

Material der Flansche:  
ASTM – A105  
Oberfläche blank

Im Lieferumfang enthalten:  
4 x Schrauben DIN 912,  
Festigkeitsklasse 8.8  
4 x Federring DIN7980

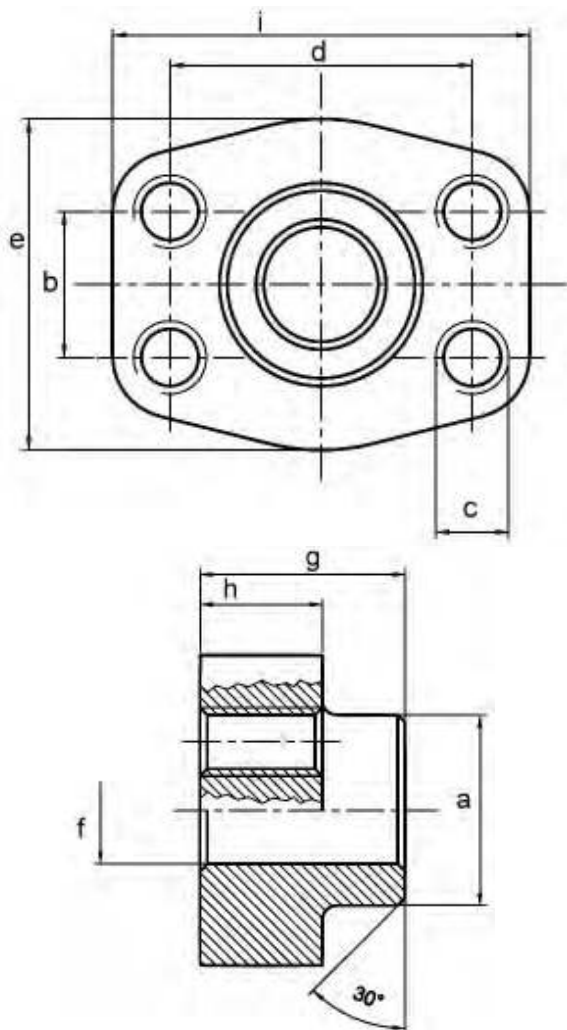
These flanges are used for the connection with SAE flanges (with inserted O-Ring).

Material of the flanges:  
ASTM – A105  
Surface blank

The scope of delivery will include:  
4 x screws DIN 912, stability 8.8  
4 x washer DIN 7980

| SAE    | Max. Druck (bar) | a    | b     | c                  |                | d      | e   | f  | g  | h  | i   | Matchcode / Code |
|--------|------------------|------|-------|--------------------|----------------|--------|-----|----|----|----|-----|------------------|
|        |                  |      |       | Schrauben / screws |                |        |     |    |    |    |     |                  |
|        | Max. Press (bar) | a    | b     | Metr.              | U.N.C.         | d      | e   | f  | g  | h  | i   | Matchcode / Code |
| 3/8"   | 348              | 17,5 | 17,48 | M 8 x 30           | 5/16" x 1-1/4" | 38,10  | 46  | 13 | 36 | 16 | 55  | ARCF 3012ST 38   |
| 1/2"   | 348              | 21,6 | 17,48 | M 8 x 30           | 5/16" x 1-1/4" | 38,10  | 46  | 13 | 36 | 16 | 55  | ARCF 3012 ST     |
| 3/4"   | 348              | 27,2 | 22,23 | M 10 x 35          | 3/8" x 1-1/2"  | 47,63  | 51  | 19 | 36 | 18 | 66  | ARCF 3034 ST     |
| 1"     | 348              | 34,1 | 26,19 | M 10 x 35          | 3/8" x 1-1/2"  | 52,37  | 56  | 25 | 38 | 21 | 71  | ARCF 3100 ST     |
| 1-1/4" | 279              | 42,8 | 30,18 | M 10 x 35          | 7/16" x 1-3/4" | 58,72  | 68  | 32 | 41 | 25 | 81  | ARCF 3114 ST     |
| 1-1/2" | 210              | 48,6 | 35,71 | M 12 x 45          | 1/2" x 1-3/4"  | 69,85  | 78  | 38 | 45 | 27 | 95  | ARCF 3112 ST     |
| 2"     | 210              | 61,0 | 42,88 | M 12 x 45          | 1/2" x 1-3/4"  | 77,77  | 91  | 51 | 45 | 25 | 102 | ARCF 3200 ST     |
| 2-1/2" | 175              | 76,6 | 50,80 | M 12 x 45          | 1/2" x 1-3/4"  | 88,90  | 103 | 63 | 50 | 25 | 114 | ARCF 3212 ST     |
| 3"     | 138              | 89,0 | 61,93 | M 16 x 55          | 5/8" x 2"      | 106,40 | 124 | 73 | 50 | 27 | 135 | ARCF 3300 ST     |

**SAE – Gegenflansch zum Anschweißen, Serie 6000 PSI**  
**SAE weld on counter flange, series 6000 PSI**



Diese Gegenflansche werden zum Verbinden mit SAE-Flanschen mit eingesetztem O-Ring benutzt.

Material der Flansche:

ASTM – A105  
Oberfläche blank

Im Lieferumfang enthalten:

4 x Schrauben DIN 912,  
Festigkeitsklasse 8.8  
4 x Federring DIN7980

These flanges are used for the connection with SAE flanges (with inserted O-Ring).

Material of the flanges:

ASTM – A105  
Surface blank

The scope of delivery will include:

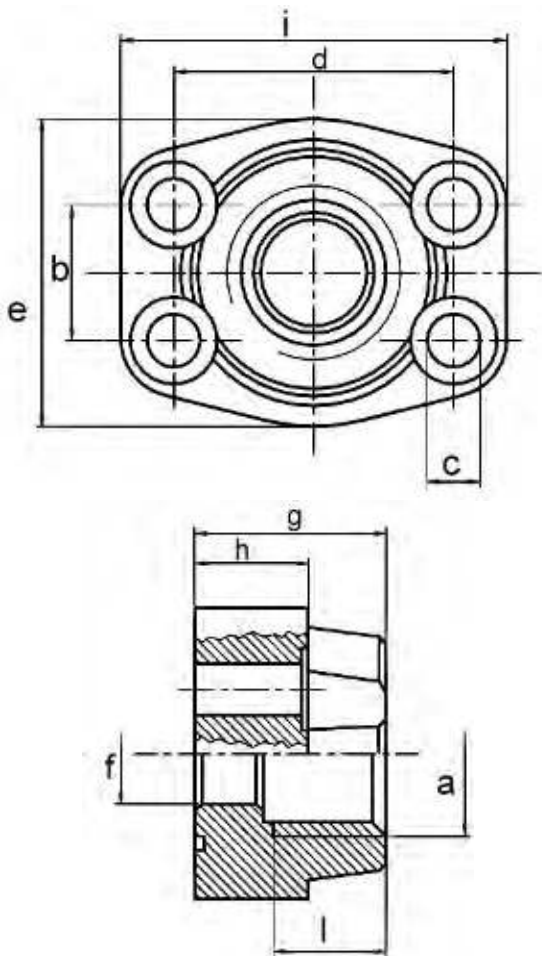
4 x screws DIN 912, stability 8.8  
4 x washer DIN 7980

| SAE    | Max. Druck (bar) | a    | b     | c<br>Schrauben / screws |                | d     | e  | f  | g  | h  | i   | Matchcode / Code |
|--------|------------------|------|-------|-------------------------|----------------|-------|----|----|----|----|-----|------------------|
|        | Max. Press (bar) | a    | b     | Metr.                   | U.N.C.         | d     | e  | f  | g  | h  | i   | Matchcode / Code |
| 3/8"   | 420              | 17,5 | 18,24 | M 8 x 30                | 5/16" x 1-1/4" | 40,49 | 46 | 13 | 36 | 16 | 55  | ARCF 6012 ST 38  |
| 1/2"   | 420              | 21,6 | 18,24 | M 8 x 30                | 5/16" x 1-1/4" | 40,49 | 46 | 13 | 36 | 16 | 55  | ARCF 6012 ST     |
| 3/4"   | 420              | 27,2 | 23,80 | M 10 x 35               | 3/8" x 1-1/2"  | 50,80 | 56 | 19 | 36 | 21 | 71  | ARCF 6034 ST     |
| 1"     | 420              | 34,1 | 27,76 | M 12 x 45               | 7/16" x 1-3/4" | 57,15 | 68 | 25 | 42 | 25 | 81  | ARCF 6100 ST     |
| 1-1/4" | 420              | 42,8 | 31,75 | M 14 x 45               | 1/2" x 1-3/4"  | 66,68 | 78 | 32 | 45 | 27 | 95  | ARCF 6114 ST     |
| 1-1/2" | 420              | 48,6 | 36,50 | M 16 x 55               | 5/8" x 2"      | 79,38 | 94 | 38 | 51 | 29 | 112 | ARCF 6112 ST     |



## SAE – Flansch mit BSP-Innengewinde, Serie 3000 PSI

### SAE flange with BSP thread, series 3000 PSI



Diese Anschlussflansche werden zum Verbinden von Pumpen und Motoren mit den weiterführenden Bauteilen, wie z. B. Schläuche oder Rohrleitungen, benutzt.

Material der Flansche:

ASTM – A105  
 Oberfläche verzinkt

Im Lieferumfang enthalten:

4 x Schrauben DIN 912,  
 Festigkeitsklasse 8.8  
 4 x Federring DIN7980  
 1 x Dichtring (O-Ring) NBR

These flanges are used to connect pumps and motors with the secondary components, such as hoses or pipes.

Material of the flanges:

ASTM – A105  
 Surface Galvanization

The scope of delivery will include:

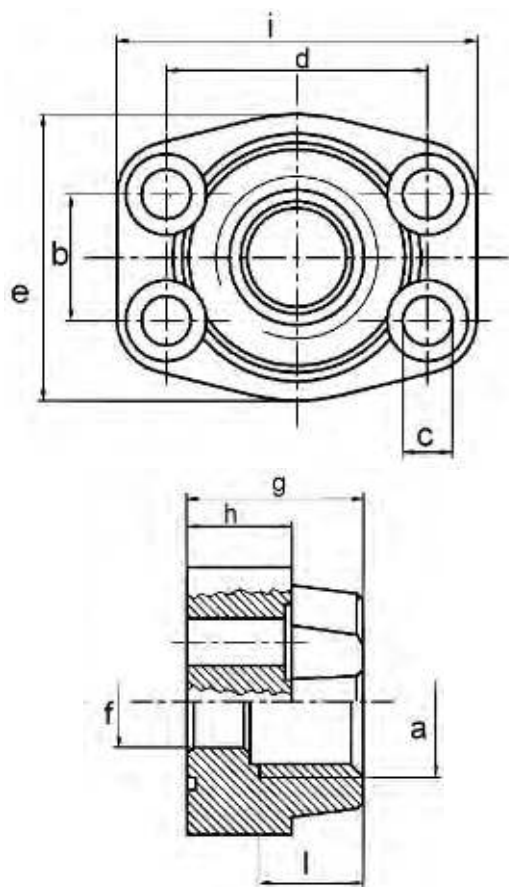
4 x screws DIN 912, stability 8.8  
 4 x washer DIN 7980  
 1 x sealing ring (O-Ring) NBR

| SAE    | Max. Druck (bar) | a      | b     | c    | d     | e  | f  | g  | h  | i  | l  | Schrauben/ Screws |                | O-Ring       | Matchcode / Code |
|--------|------------------|--------|-------|------|-------|----|----|----|----|----|----|-------------------|----------------|--------------|------------------|
|        |                  | a      | b     | c    | d     | e  | f  | g  | h  | i  | l  | Metr.             | U.N.C.         | O-Ring       | Matchcode / Code |
| 3/8"   | 348              | 3/8"   | 17,48 | 8,5  | 38,10 | 46 | 13 | 36 | 16 | 55 | 20 | M 8 x 30          | 5/16" x 1-1/4" | 18,64 x 3,53 | ARF 3012 G38     |
| 1/2"   | 348              | 1/2"   | 17,48 | 8,5  | 38,10 | 46 | 13 | 36 | 16 | 55 | 20 | M 8 x 30          | 5/16" x 1-1/4" | 18,64 x 3,53 | ARF 3012 G12     |
| 1/2"   | 348              | 1/2"   | 22,23 | 10,5 | 47,63 | 51 | 18 | 36 | 18 | 66 | 21 | M 10 x 35         | 3/8" x 1-1/2"  | 24,99 x 3,53 | ARF 3034 G12     |
| 3/4"   | 348              | 3/4"   | 22,23 | 10,5 | 47,63 | 51 | 19 | 36 | 18 | 66 | 21 | M 10 x 35         | 3/8" x 1-1/2"  | 24,99 x 3,53 | ARF 3034 G34     |
| 3/4"   | 348              | 3/4"   | 26,19 | 10,5 | 52,37 | 56 | 19 | 38 | 21 | 71 | 23 | M 10 x 35         | 3/8" x 1-1/2"  | 32,93 x 3,53 | ARF 3100 G34     |
| 1"     | 279              | 1"     | 26,19 | 10,5 | 52,37 | 56 | 25 | 38 | 21 | 71 | 23 | M 10 x 35         | 3/8" x 1-1/2"  | 32,93 x 3,53 | ARF 3100 G100    |
| 1"     | 279              | 1"     | 30,18 | 11,5 | 58,72 | 68 | 25 | 41 | 25 | 81 | 23 | M 10 x 35         | 7/16" x 1-3/4" | 37,69 x 3,53 | ARF 3114 G100    |
| 1-1/4" | 210              | 1-1/4" | 30,18 | 11,5 | 58,72 | 68 | 32 | 41 | 25 | 81 | 23 | M 10 x 35         | 7/16" x 1-3/4" | 37,69 x 3,53 | ARF 3114 G114    |

**SAE – Flansch mit BSP-Innengewinde, Serie 3000 PSI**  
**SAE flange with BSP thread, series 3000 PSI**

| SAE    | Max. Druck (bar) | a      | b     | c    | d      | e   | f  | g  | h  | i   | l  | Schrauben/<br>Screws |               | O-Ring       | Matchcode / Code |
|--------|------------------|--------|-------|------|--------|-----|----|----|----|-----|----|----------------------|---------------|--------------|------------------|
|        | Max. Press (bar) | a      | b     | c    | d      | e   | f  | g  | h  | i   | l  | Metr.                | U.N.C.        | O-Ring       | Matchcode / Code |
| 1-1/4" | 210              | 1-1/4" | 35,71 | 13,5 | 69,85  | 78  | 32 | 45 | 27 | 95  | 25 | M 12 x 45            | 1/2" x 1-3/4" | 47,22 x 3,53 | ARF 3112 G114    |
| 1-1/2" | 210              | 1-1/2" | 35,71 | 13,5 | 69,85  | 78  | 38 | 45 | 27 | 95  | 25 | M 12 x 45            | 1/2" x 1-3/4" | 47,22 x 3,53 | ARF 3112 G112    |
| 1-1/2" | 210              | 1-1/2" | 42,88 | 13,5 | 77,77  | 91  | 38 | 45 | 25 | 102 | 25 | M 12 x 45            | 1/2" x 1-3/4" | 56,74 x 3,53 | ARF 3200 G112    |
| 2"     | 210              | 2"     | 42,88 | 13,5 | 77,77  | 91  | 51 | 45 | 25 | 102 | 25 | M 12 x 45            | 1/2" x 1-3/4" | 56,74 x 3,53 | ARF 3200 G200    |
| 2"     | 175              | 2"     | 50,80 | 13,5 | 88,90  | 103 | 51 | 50 | 25 | 114 | 30 | M 12 x 45            | 1/2" x 1-3/4" | 69,44 x 3,53 | ARF 3212 G200    |
| 2-1/2" | 175              | 2-1/2" | 50,80 | 13,5 | 88,90  | 103 | 63 | 50 | 25 | 114 | 30 | M 12 x 45            | 1/2" x 1-3/4" | 69,44 x 3,53 | ARF 3212 G212    |
| 2-1/2" | 138              | 2-1/2" | 61,93 | 17   | 106,40 | 124 | 63 | 50 | 27 | 135 | 30 | M 16 x 55            | 5/8" x 2"     | 85,32 x 3,53 | ARF 3300 G212    |
| 3"     | 138              | 3"     | 61,93 | 17   | 106,40 | 124 | 73 | 50 | 27 | 135 | 30 | M 16 x 55            | 5/8" x 2"     | 85,32 x 3,53 | ARF 3300 G300    |

**SAE – Flansch mit BSP-Innengewinde, Serie 6000 PSI**  
**SAE flange with BSP thread, series 6000 PSI**



Diese Anschlussflansche werden zum Verbinden von Pumpen und Motoren mit den weiterführenden Bauteilen, wie z. B. Schläuche oder Rohrleitungen, benutzt.

Material der Flansche:  
ASTM – A105  
Oberfläche verzinkt

Im Lieferumfang enthalten:  
4 x Schrauben DIN 912,  
Festigkeitsklasse 8.8  
4 x Federring DIN7980  
1 x Dichtring (O-Ring) NBR

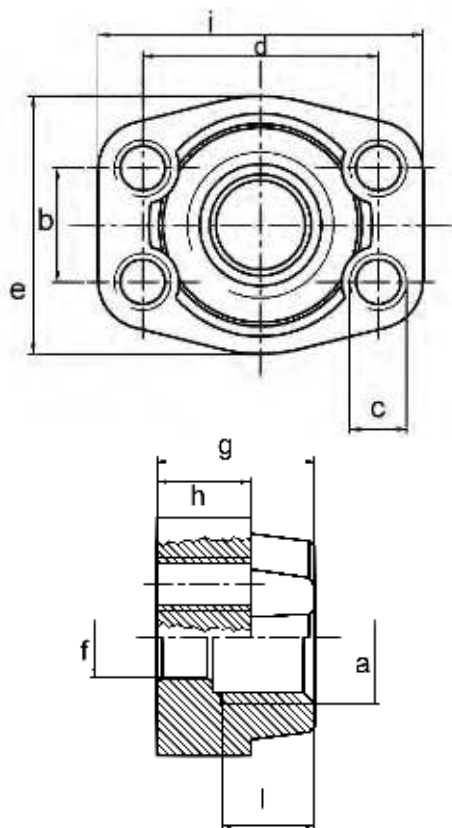
These flanges are used to connect pumps and motors with the secondary components, such as hoses or pipes.

Material of the flanges:  
ASTM – A105  
Surface Galvanization

The scope of delivery will include:  
4 x screws DIN 912, stability 8.8  
4 x washer DIN 7980  
1 x sealing ring (O-Ring) NBR

| SAE    | Max. Druck (bar)<br>Max. Press (bar) | a      | b     | c    | d     | e  | f  | g  | h  | i   | l  | Schrauben/<br>Screws |                | O-Ring       | Matchcode / Code |
|--------|--------------------------------------|--------|-------|------|-------|----|----|----|----|-----|----|----------------------|----------------|--------------|------------------|
|        |                                      | a      | b     | c    | d     | e  | f  | g  | h  | i   | l  | Metr.                | U.N.C.         | O-Ring       | Matchcode / Code |
| 3/8"   | 420                                  | 3/8"   | 18,24 | 8,5  | 40,49 | 46 | 13 | 36 | 16 | 55  | 20 | M 8 x 30             | 5/16" x 1-1/4" | 18,64 x 3,53 | ARF 6012 G38     |
| 1/2"   | 420                                  | 1/2"   | 18,24 | 8,5  | 40,49 | 46 | 13 | 36 | 16 | 55  | 20 | M 8 x 30             | 5/16" x 1-1/4" | 18,64 x 3,53 | ARF 6012 G12     |
| 1/2"   | 420                                  | 1/2"   | 23,80 | 10,5 | 50,80 | 56 | 18 | 36 | 21 | 71  | 21 | M 10 x 35            | 3/8" x 1-1/2"  | 24,99 x 3,53 | ARF 6034 G12     |
| 3/4"   | 420                                  | 3/4"   | 23,80 | 10,5 | 50,80 | 56 | 19 | 36 | 21 | 71  | 21 | M 10 x 35            | 3/8" x 1-1/2"  | 24,99 x 3,53 | ARF 6034 G34     |
| 3/4"   | 420                                  | 3/4"   | 27,76 | 13   | 57,15 | 68 | 19 | 42 | 25 | 81  | 23 | M 12 x 45            | 7/16" x 1-3/4" | 32,93 x 3,53 | ARF 6100 G34     |
| 1"     | 420                                  | 1"     | 27,76 | 13   | 57,15 | 68 | 25 | 42 | 25 | 81  | 23 | M 12 x 45            | 7/16" x 1-3/4" | 32,93 x 3,53 | ARF 6100 G100    |
| 1"     | 420                                  | 1"     | 31,75 | 15   | 66,68 | 78 | 25 | 45 | 27 | 95  | 25 | M 14 x 45            | 1/2" x 1-3/4"  | 37,69 x 3,53 | ARF 6114 G100    |
| 1-1/4" | 420                                  | 1-1/4" | 31,75 | 15   | 66,68 | 78 | 32 | 45 | 27 | 95  | 25 | M 14 x 45            | 1/2" x 1-3/4"  | 37,69 x 3,53 | ARF 6114 G114    |
| 1-1/4" | 420                                  | 1-1/4" | 36,50 | 17   | 79,38 | 94 | 32 | 51 | 29 | 112 | 29 | M 16 x 55            | 5/8" x 2"      | 47,22 x 3,53 | ARF 6112 G114    |
| 1-1/2" | 420                                  | 1-1/2" | 36,50 | 17   | 79,38 | 94 | 38 | 51 | 29 | 112 | 29 | M 16 x 55            | 5/8" x 2"      | 47,22 x 3,53 | ARF 6112 G112    |

**SAE – Gegenflansch mit Gewinde, Serie 3000 PSI**  
**SAE counter flange thread, series 3000 PSI**



Diese Gegenflansche werden zum Verbinden mit SAE-Flanschen mit eingesetztem O-Ring benutzt.

Material der Flansche:

ASTM – A105  
Oberfläche verzinkt

Im Lieferumfang enthalten:

4 x Schrauben DIN 912,  
Festigkeitsklasse 8.8  
4 x Federring DIN7980

These flanges are used for the connection with SAE flanges (with inserted O-Ring).

Material of the flanges:

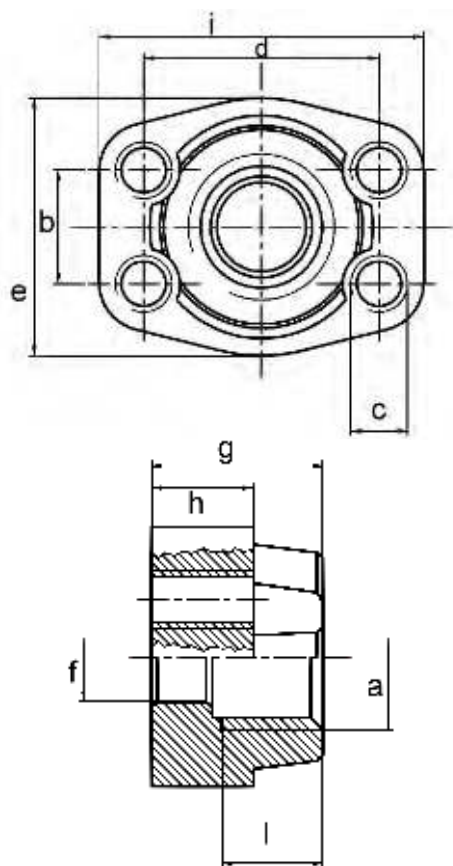
ASTM – A105  
Surface Galvanization

The scope of delivery will include:

4 x screws DIN 912, stability 8.8  
4 x washer DIN 7980

| SAE    | Max. Druck (bar) | a      | b     | c<br>Schrauben / screws |                | d      | e   | f  | g  | h  | i   | l  | Matchcode / Code |
|--------|------------------|--------|-------|-------------------------|----------------|--------|-----|----|----|----|-----|----|------------------|
|        | Max. Press (bar) | a      | b     | Metr.                   | U.N.C.         | d      | e   | f  | g  | h  | i   | l  | Matchcode / Code |
| 3/8"   | 348              | 3/8"   | 17,48 | M 8 x 30                | 5/16" x 1-1/4" | 38,10  | 46  | 13 | 36 | 16 | 55  | 20 | ARCF 3012 G38    |
| 1/2"   | 348              | 1/2"   | 17,48 | M 8 x 30                | 5/16" x 1-1/4" | 38,10  | 46  | 13 | 36 | 16 | 55  | 20 | ARCF 3012 G12    |
| 1/2"   | 348              | 1/2"   | 22,23 | M 10 x 35               | 3/8" x 1-1/2"  | 47,63  | 51  | 18 | 36 | 18 | 66  | 21 | ARCF 3034 G12    |
| 3/4"   | 348              | 3/4"   | 22,23 | M 10 x 35               | 3/8" x 1-1/2"  | 47,63  | 51  | 19 | 36 | 18 | 66  | 21 | ARCF 3034 G34    |
| 3/4"   | 348              | 3/4"   | 26,19 | M 10 x 35               | 3/8" x 1-1/2"  | 52,37  | 56  | 19 | 38 | 21 | 71  | 23 | ARCF 3100 G34    |
| 1"     | 348              | 1"     | 26,19 | M 10 x 35               | 3/8" x 1-1/2"  | 52,37  | 56  | 25 | 38 | 21 | 71  | 23 | ARCF 3100 G100   |
| 1"     | 279              | 1"     | 30,18 | M 10 x 35               | 7/16" x 1-3/4" | 58,72  | 68  | 25 | 41 | 25 | 81  | 23 | ARCF 3114 G100   |
| 1-1/4" | 279              | 1-1/4" | 30,18 | M 10 x 35               | 7/16" x 1-3/4" | 58,72  | 68  | 32 | 41 | 25 | 81  | 23 | ARCF 3114 G114   |
| 1-1/4" | 210              | 1-1/4" | 35,71 | M 12 x 45               | 1/2" x 1-3/4"  | 69,85  | 78  | 32 | 45 | 27 | 95  | 25 | ARCF 3112 G114   |
| 1-1/2" | 210              | 1-1/2" | 35,71 | M 12 x 45               | 1/2" x 1-3/4"  | 69,85  | 78  | 38 | 45 | 27 | 95  | 25 | ARCF 3112 G112   |
| 1-1/2" | 210              | 1-1/2" | 42,88 | M 12 x 45               | 1/2" x 1-3/4"  | 77,77  | 91  | 38 | 45 | 25 | 102 | 25 | ARCF 3200 G112   |
| 2"     | 210              | 2"     | 42,88 | M 12 x 45               | 1/2" x 1-3/4"  | 77,77  | 91  | 51 | 45 | 25 | 102 | 25 | ARCF 3200 G200   |
| 2"     | 175              | 2"     | 50,80 | M 12 x 45               | 1/2" x 1-3/4"  | 88,90  | 103 | 51 | 50 | 25 | 114 | 30 | ARCF 3212 G200   |
| 2-1/2" | 175              | 2-1/2" | 50,80 | M 12 x 45               | 1/2" x 1-3/4"  | 88,90  | 103 | 63 | 50 | 25 | 114 | 30 | ARCF 3212 G212   |
| 2-1/2" | 138              | 2-1/2" | 61,93 | M 16 x 55               | 5/8" x 2"      | 106,40 | 124 | 63 | 50 | 27 | 135 | 30 | ARCF 3300 G212   |
| 3"     | 138              | 3"     | 61,93 | M 16 x 55               | 5/8" x 2"      | 106,40 | 124 | 73 | 50 | 27 | 135 | 30 | ARCF 3300 G300   |

**SAE – Gegenflansch mit Gewinde, Serie 6000 PSI**  
**SAE counter flange thread, series 6000 PSI**



Diese Gegenflansche werden zum Verbinden mit SAE-Flanschen mit eingesetztem O-Ring benutzt.

Material der Flansche:  
ASTM – A105  
Oberfläche verzinkt

Im Lieferumfang enthalten:  
4 x Schrauben DIN 912,  
Festigkeitsklasse 8.8  
4 x Federring DIN7980

These flanges are used for the connection with SAE flanges (with inserted O-Ring).

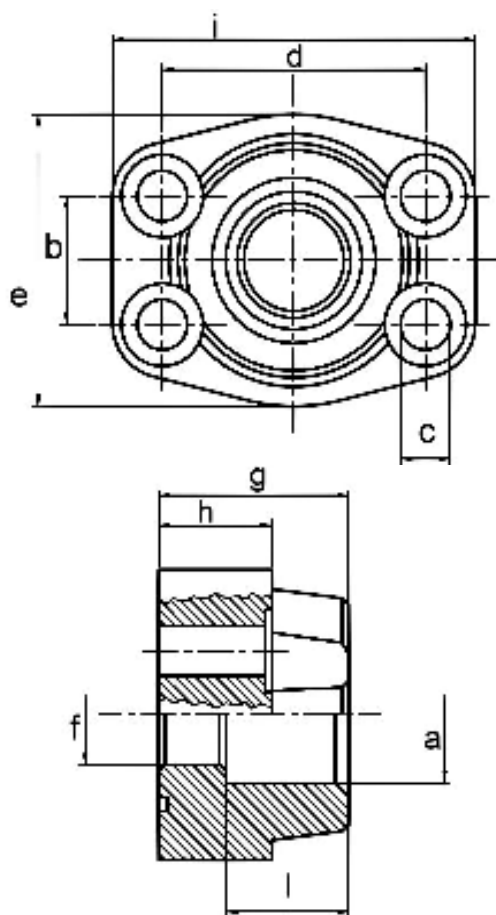
Material of the flanges:  
ASTM – A105  
Surface Galvanization

The scope of delivery will include:  
4 x screws DIN 912, stability 8.8  
4 x washer DIN 7980

| SAE    | Max. Druck (bar) | a      | b     | c<br>Schrauben / screws |                | d     | e  | f  | g  | h  | i   | l  | Matchcode / Code |
|--------|------------------|--------|-------|-------------------------|----------------|-------|----|----|----|----|-----|----|------------------|
|        |                  |        |       | Metr.                   | U.N.C.         |       |    |    |    |    |     |    |                  |
| 3/8"   | 420              | 3/8"   | 18,24 | M 8 x 30                | 5/16" x 1-1/4" | 40,49 | 46 | 13 | 36 | 16 | 55  | 20 | ARCF 6012 G38    |
| 1/2"   | 420              | 1/2"   | 18,24 | M 8 x 30                | 5/16" x 1-1/4" | 40,49 | 46 | 13 | 36 | 16 | 55  | 20 | ARCF 6012 G12    |
| 1/2"   | 420              | 1/2"   | 23,80 | M 10 x 35               | 3/8" 1-1/2"    | 50,80 | 56 | 18 | 36 | 21 | 71  | 21 | ARCF 6034 G12    |
| 3/4"   | 420              | 3/4"   | 23,80 | M 10 x 35               | 3/8" 1-1/2"    | 50,80 | 56 | 19 | 36 | 21 | 71  | 21 | ARCF 6034 G34    |
| 3/4"   | 420              | 3/4"   | 27,76 | M 12 x 45               | 7/16" x 1-3/4" | 57,15 | 68 | 19 | 42 | 25 | 81  | 23 | ARCF 6100 G34    |
| 1"     | 420              | 1"     | 27,76 | M 12 x 45               | 7/16" x 1-3/4" | 57,15 | 68 | 25 | 42 | 25 | 81  | 23 | ARCF 6100 G100   |
| 1"     | 420              | 1"     | 31,75 | M 14 x 45               | 1/2" x 1-3/4"  | 66,68 | 78 | 25 | 45 | 27 | 95  | 25 | ARCF 6114 G100   |
| 1-1/4" | 420              | 1-1/4" | 31,75 | M 14 x 45               | 1/2" x 1-3/4"  | 66,68 | 78 | 32 | 45 | 27 | 95  | 25 | ARCF 6114 G114   |
| 1-1/4" | 420              | 1-1/4" | 36,50 | M 16 x 55               | 5/8" x 2"      | 79,38 | 94 | 32 | 51 | 29 | 112 | 29 | ARCF 6112 G114   |
| 1-1/2" | 420              | 1-1/2" | 36,50 | M 16 x 55               | 5/8" x 2"      | 79,38 | 94 | 38 | 51 | 29 | 112 | 29 | ARCF 6112 G112   |



**SAE – Einschweißflansch, Serie 3000 PSI**  
**SAE weld in flange, series 3000 PSI**



Diese Anschlussflansche werden zum Verbinden von Pumpen und Motoren mit den weiterführenden Bauteilen, wie z. B. Schläuche oder Rohrleitungen, benutzt.

Material der Flansche:

ASTM – A105  
Oberfläche blank

Im Lieferumfang enthalten:

4 x Schrauben DIN 912,  
Festigkeitsklasse 8.8  
4 x Federring DIN7980  
1 x Dichtring (O-Ring) NBR

These flanges are used to connect pumps and motors with the secondary components, such as hoses or pipes.

Material of the flanges:

ASTM – A105  
Surface blank

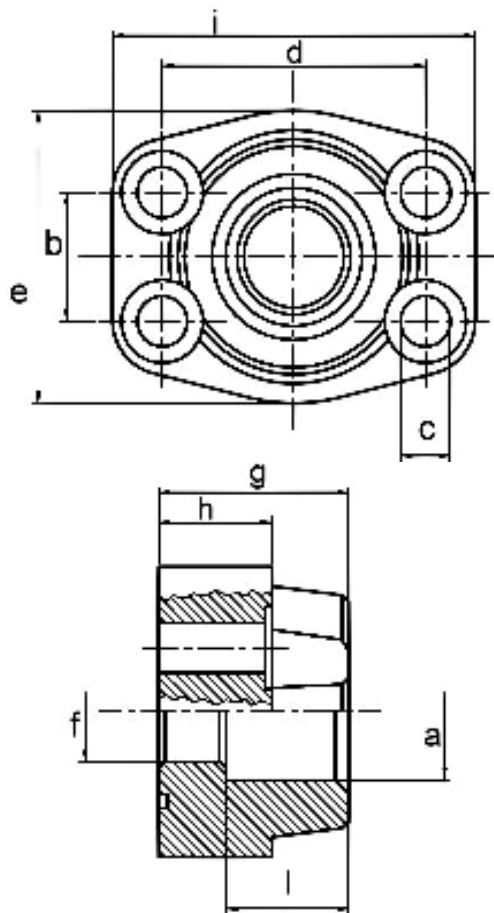
The scope of delivery will include:

4 x screws DIN 912, stability 8.8  
4 x washer DIN 7980  
1 x sealing ring (O-Ring) NBR

| SAE    | Max. Druck (bar) | a                | b     | c    | d      | e   | f  | g  | h  | i   | l  | Schrauben/Screws |                | O-Ring       | Matchcode / Code |
|--------|------------------|------------------|-------|------|--------|-----|----|----|----|-----|----|------------------|----------------|--------------|------------------|
|        |                  | Max. Press (bar) | a     | b    | c      | d   | e  | f  | g  | h   | i  | l                | Metr.          | U.N.C.       | O-Ring           |
| 3/8"   | 348              | 17,5             | 17,48 | 8,5  | 38,10  | 46  | 13 | 36 | 16 | 55  | 19 | M 8 x 30         | 5/16" x 1-1/4" | 18,64 x 3,53 | ARF 3012 S 38    |
| 1/2"   | 348              | 21,6             | 17,48 | 8,5  | 38,10  | 46  | 13 | 36 | 16 | 55  | 19 | M 8 x 30         | 5/16" x 1-1/4" | 18,64 x 3,53 | ARF 3012 S       |
| 3/4"   | 348              | 27,2             | 22,23 | 10,5 | 47,63  | 51  | 19 | 36 | 18 | 66  | 19 | M 10 x 35        | 3/8" x 1-1/2"  | 24,99 x 3,53 | ARF 3034 S       |
| 1"     | 348              | 34,1             | 26,19 | 10,5 | 52,37  | 56  | 25 | 38 | 21 | 71  | 19 | M 10 x 35        | 3/8" x 1-1/2"  | 32,93 x 3,53 | ARF 3100 S       |
| 1-1/4" | 279              | 42,8             | 30,18 | 11,5 | 58,72  | 68  | 32 | 41 | 25 | 81  | 22 | M 10 x 35        | 7/16" x 1-3/4" | 37,69 x 3,53 | ARF 3114 S       |
| 1-1/2" | 210              | 48,6             | 35,71 | 13,5 | 69,85  | 78  | 38 | 45 | 27 | 95  | 24 | M 12 x 45        | 1/2" x 1-3/4"  | 47,22 x 3,53 | ARF 3112 S       |
| 2"     | 210              | 61,0             | 42,88 | 13,5 | 77,77  | 91  | 51 | 45 | 25 | 102 | 28 | M 12 x 45        | 1/2" x 1-3/4"  | 56,74 x 3,53 | ARF 3200 S       |
| 2-1/2" | 175              | 76,6             | 50,80 | 13,5 | 88,90  | 103 | 63 | 50 | 25 | 114 | 30 | M 12 x 45        | 1/2" x 1-3/4"  | 69,44 x 3,53 | ARF 3212 S       |
| 3"     | 138              | 90,5             | 61,93 | 17   | 106,40 | 124 | 73 | 50 | 27 | 135 | 30 | M 16 x 55        | 5/8" x 2"      | 85,32 x 3,53 | ARF 3300 S       |



**SAE – Einschweißflansch, Serie 6000 PSI**  
**SAE weld in flange, series 6000 PSI**



Diese Anschlussflansche werden zum Verbinden von Pumpen und Motoren mit den weiterführenden Bauteilen, wie z. B. Schläuche oder Rohrleitungen, benutzt.

Material der Flansche:  
ASTM – A105  
Oberfläche blank

Im Lieferumfang enthalten:  
4 x Schrauben DIN 912,  
Festigkeitsklasse 8.8  
4 x Federring DIN7980  
1 x Dichtring (O-Ring) NBR

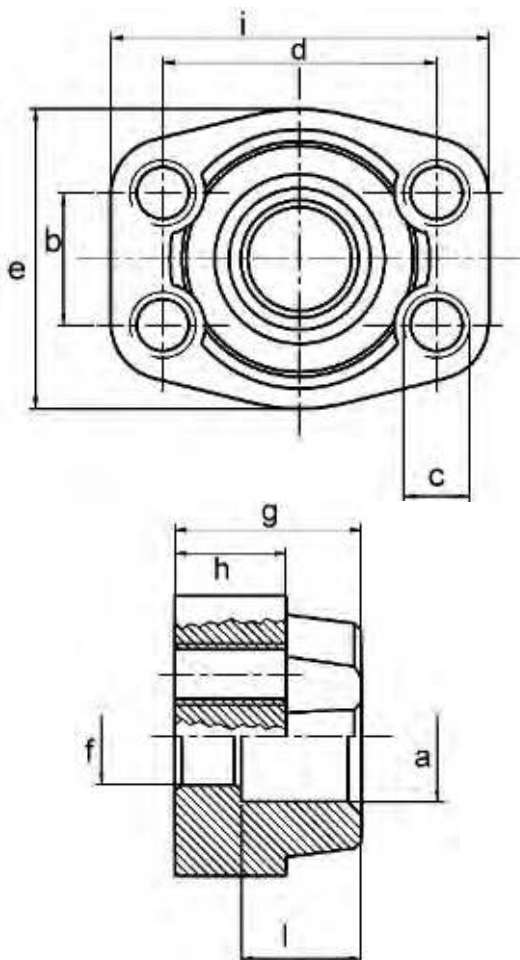
These flanges are used to connect pumps and motors with the secondary components, such as hoses or pipes.

Material of the flanges:  
ASTM – A105  
Surface blank

The scope of delivery will include:  
4 x screws DIN 912, stability 8.8  
4 x washer DIN 7980  
1 x sealing ring (O-Ring) NBR

| SAE    | Max. Druck (bar)<br>Max. Press (bar) | a    | b     | c    | d     | e  | f  | g  | h  | i   | l  | Schrauben/<br>Screws |                | O-Ring       | Matchcode /<br>Code |
|--------|--------------------------------------|------|-------|------|-------|----|----|----|----|-----|----|----------------------|----------------|--------------|---------------------|
|        |                                      | a    | b     | c    | d     | e  | f  | g  | h  | i   | l  | Metr.                | U.N.C.         | O-Ring       | Matchcode /<br>Code |
| 3/8"   | 420                                  | 17,5 | 18,24 | 8,5  | 40,49 | 46 | 13 | 36 | 16 | 55  | 19 | M 8 x 30             | 5/16" x 1-1/4" | 18,64 x 3,53 | TRF 6012 S 38       |
| 1/2"   | 420                                  | 21,6 | 18,24 | 8,5  | 40,49 | 46 | 13 | 36 | 16 | 55  | 19 | M 8 x 30             | 5/16" x 1-1/4" | 18,64 x 3,53 | TRF 6012 S          |
| 3/4"   | 420                                  | 27,2 | 23,80 | 10,5 | 50,80 | 56 | 19 | 36 | 21 | 71  | 22 | M 10 x 35            | 3/8" x 1-1/2"  | 24,99 x 3,53 | TRF 6034 S          |
| 1"     | 420                                  | 34,1 | 27,76 | 13   | 57,15 | 68 | 25 | 42 | 25 | 81  | 24 | M 12 x 45            | 7/16" x 1-3/4" | 32,93 x 3,53 | TRF 6100 S          |
| 1-1/4" | 420                                  | 42,8 | 31,75 | 15   | 66,68 | 78 | 32 | 45 | 27 | 95  | 25 | M 14 x 45            | 1/2" x 1-3/4"  | 37,69 x 3,53 | TRF 6114 S          |
| 1-1/2" | 420                                  | 48,6 | 36,50 | 17   | 79,38 | 94 | 38 | 51 | 29 | 112 | 29 | M 16 x 55            | 5/8" x 2"      | 47,22 x 3,53 | TRF 6112 S          |

**SAE – Einschweiß-Gegenflansch, Serie 3000 PSI**  
**SAE – weld in counter flange, series 3000 PSI**



Diese Anschlussflansche werden zum Verbinden von Pumpen und Motoren mit den weiterführenden Bauteilen, wie z. B. Schläuche oder Rohrleitungen, benutzt.

Material der Flansche:  
ASTM – A105  
Oberfläche blank

Im Lieferumfang enthalten:  
4 x Schrauben DIN 912,  
Festigkeitsklasse 8.8  
4 x Federring DIN7980

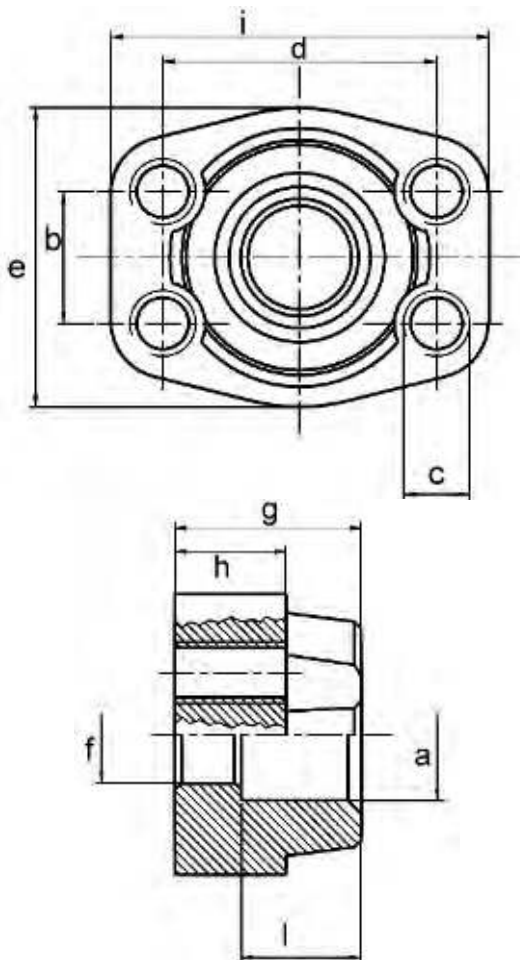
These flanges are used to connect pumps and motors with the secondary components, such as hoses or pipes.

Material of the flanges:  
ASTM – A105  
Surface blank

The scope of delivery will include:  
4 x screws DIN 912, stability 8.8  
4 x washer DIN 7980

| SAE    | Max. Druck (bar) | a    | b     | c<br>Schrauben / screws |                | d      | e   | f  | g  | h  | i   | l  | Matchcode / Code |
|--------|------------------|------|-------|-------------------------|----------------|--------|-----|----|----|----|-----|----|------------------|
|        |                  |      |       | Metr.                   | U.N.C.         |        |     |    |    |    |     |    |                  |
| 3/8"   | 348              | 17,5 | 17,48 | M 8 x 30                | 5/16" x 1-1/4" | 38,10  | 46  | 13 | 36 | 16 | 55  | 19 | ARCF 3012 S 38   |
| 1/2"   | 348              | 21,6 | 17,48 | M 8 x 30                | 5/16" x 1-1/4" | 38,10  | 46  | 13 | 36 | 16 | 55  | 19 | ARCF 3012 S      |
| 3/4"   | 348              | 27,2 | 22,23 | M 10 x 35               | 3/8" x 1-1/2"  | 47,63  | 51  | 19 | 36 | 18 | 66  | 19 | ARCF 3034 S      |
| 1"     | 348              | 34,1 | 26,19 | M 10 x 35               | 3/8" x 1-1/2"  | 52,37  | 56  | 25 | 38 | 21 | 71  | 19 | ARCF 3100 S      |
| 1-1/4" | 279              | 42,8 | 30,18 | M 10 x 35               | 7/16" x 1-3/4" | 58,72  | 68  | 32 | 41 | 25 | 81  | 22 | ARCF 3114 S      |
| 1-1/2" | 210              | 48,6 | 35,71 | M 12 x 45               | 1/2" x 1-3/4"  | 69,85  | 78  | 38 | 45 | 27 | 95  | 24 | ARCF 3112 S      |
| 2"     | 210              | 61,0 | 42,88 | M 12 x 45               | 1/2" x 1-3/4"  | 77,77  | 91  | 51 | 45 | 25 | 102 | 28 | ARCF 3200 S      |
| 2-1/2" | 175              | 76,6 | 50,80 | M 12 x 45               | 1/2" x 1-3/4"  | 88,90  | 103 | 63 | 50 | 25 | 114 | 30 | ARCF 3212 S      |
| 3"     | 138              | 90,5 | 61,93 | M 16 x 55               | 5/8" x 2"      | 106,40 | 124 | 73 | 50 | 27 | 135 | 30 | ARCF 3300 S      |

**SAE – Einschweiß-Gegenflansch, Serie 6000 PSI**  
**SAE – weld in counter flange, series 6000 PSI**



Diese Anschlussflansche werden zum Verbinden von Pumpen und Motoren mit den weiterführenden Bauteilen, wie z. B. Schläuche oder Rohrleitungen, benutzt.

Material der Flansche:  
ASTM – A105  
Oberfläche blank

Im Lieferumfang enthalten:  
4 x Schrauben DIN 912,  
Festigkeitsklasse 8.8  
4 x Federring DIN7980

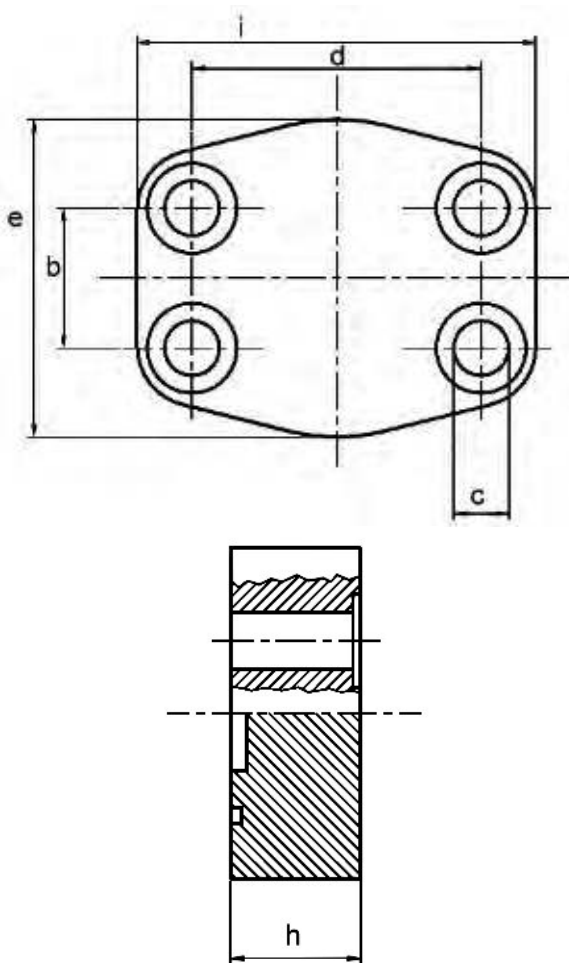
These flanges are used to connect pumps and motors with the secondary components, such as hoses or pipes.

Material of the flanges:  
ASTM – A105  
Surface blank

The scope of delivery will include:  
4 x screws DIN 912, stability 8.8  
4 x washer DIN 7980

| SAE    | Max. Druck (bar) | a    | b     | c<br>Schrauben / screws |                | d     | e  | f  | g  | h  | i   | l  | Matchcode / Code |
|--------|------------------|------|-------|-------------------------|----------------|-------|----|----|----|----|-----|----|------------------|
|        | Max. Press (bar) | a    | b     | Metr.                   | U.N.C.         | d     | e  | f  | g  | h  | i   | l  | Matchcode / Code |
| 3/8"   | 420              | 17,5 | 18,24 | M 8 x 30                | 5/16" x 1-1/4" | 40,49 | 46 | 13 | 36 | 16 | 55  | 19 | ARCF 6012 S 38   |
| 1/2"   | 420              | 21,6 | 18,24 | M 8 x 30                | 5/16" x 1-1/4" | 40,49 | 46 | 13 | 36 | 16 | 55  | 19 | ARCF 6012 S      |
| 3/4"   | 420              | 27,2 | 23,80 | M 10 x 35               | 3/8" x 1-1/2"  | 50,80 | 56 | 19 | 36 | 21 | 71  | 22 | ARCF 6034 S      |
| 1"     | 420              | 34,1 | 27,76 | M 12 x 45               | 7/16" x 1-3/4" | 57,15 | 68 | 25 | 42 | 25 | 81  | 24 | ARCF 6100 S      |
| 1-1/4" | 420              | 42,8 | 31,75 | M 14 x 45               | 1/2" x 1-3/4"  | 66,68 | 78 | 32 | 45 | 27 | 95  | 25 | ARCF 6114 S      |
| 1-1/2" | 420              | 48,6 | 36,50 | M 16 x 55               | 5/8" x 2"      | 79,38 | 94 | 38 | 51 | 29 | 112 | 29 | ARCF 6112 S      |

**SAE – Abschlussplatte, Serie 3000 PSI**  
**SAE – closed flanges, series 3000 PSI**



Diese Abschlussplatten werden zum Schließen von SAE-Flanschen verwendet.

Material der Flansche:  
ASTM – A105

Im Lieferumfang enthalten:  
4 x Schrauben DIN 912,  
Festigkeitsklasse 8.8  
4 x Federring DIN7980  
1 x Dichtring (O-Ring) NBR

These closed flanges are used to close SAE flanges.

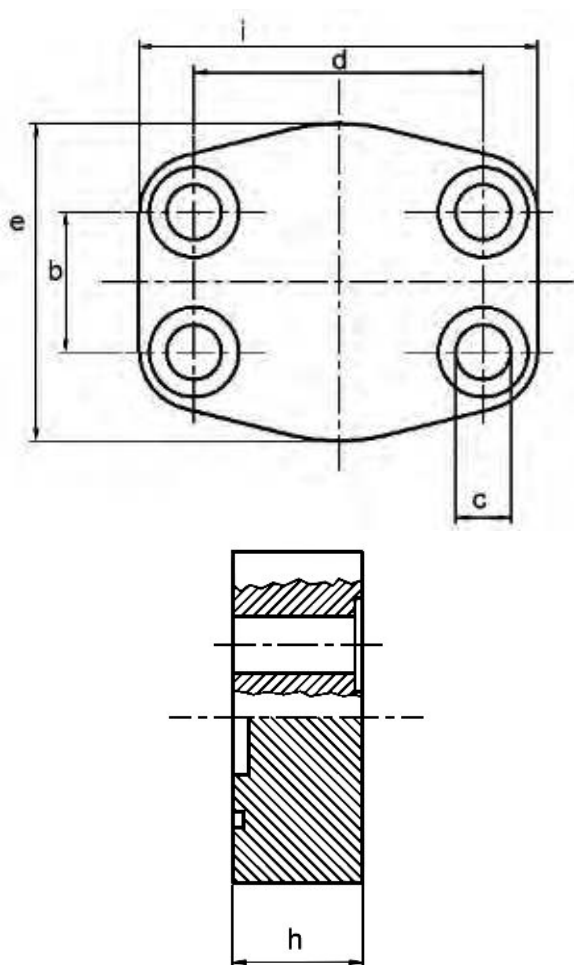
Material of the flanges:  
ASTM – A105

The scope of delivery will include:  
4 x screws DIN 912, stability 8.8  
4 x washer DIN 7980  
1 x sealing ring (O-Ring) NBR

Markus – bitte prüfen ob Oberfläche verzinkt: Ja ? / Nein ?

| SAE    | Max. Druck (bar) | b                | c    | d     | e   | h  | i   | Schrauben/ Screws |                | O-Ring       | Matchcode / Code |
|--------|------------------|------------------|------|-------|-----|----|-----|-------------------|----------------|--------------|------------------|
|        |                  | Max. Press (bar) | b    | c     | d   | e  | h   | i                 | Metr.          | U.N.C.       | O-Ring           |
| 1/2"   | 348              | 17,48            | 8,5  | 38,10 | 46  | 16 | 55  | M 8 x 30          | 5/16" x 1-1/4" | 18,64 x 3,53 | ARC 3012         |
| 3/4"   | 348              | 22,23            | 11   | 47,63 | 51  | 16 | 66  | M 10 x 35         | 3/8" x 1-1/2"  | 24,99 x 3,53 | ARC 3034         |
| 1"     | 348              | 26,19            | 11   | 52,37 | 56  | 18 | 71  | M 10 x 35         | 3/8" x 1-1/2"  | 32,93 x 3,53 | ARC 3100         |
| 1-1/4" | 279              | 30,18            | 11,5 | 58,72 | 68  | 18 | 81  | M 10 x 35         | 7/16" x 1-3/4" | 37,69 x 3,53 | ARC 3114         |
| 1-1/2" | 210              | 35,71            | 13,5 | 69,85 | 78  | 21 | 95  | M 12 x 45         | 1/2" x 1-3/4"  | 47,22 x 3,53 | ARC 3112         |
| 2"     | 210              | 42,88            | 13,5 | 77,77 | 91  | 21 | 102 | M 12 x 45         | 1/2" x 1-3/4"  | 56,74 x 3,53 | ARC 3200         |
| 2-1/2" | 175              | 50,80            | 13,5 | 88,90 | 103 | 21 | 114 | M 12 x 45         | 1/2" x 1-3/4"  | 69,44 x 3,53 | ARC 3212         |

**SAE – Abschlussplatte, Serie 6000 PSI**  
**SAE – closed flanges, series 6000 PSI**



Diese Abschlussplatten werden zum Schließen von SAE-Flanschen verwendet.

Material der Flansche:  
ASTM – A105

Im Lieferumfang enthalten:  
4 x Schrauben DIN 912,  
Festigkeitsklasse 8.8  
4 x Federring DIN7980  
1 x Dichtring (O-Ring) NBR

These closed flanges are used to close SAE flanges.

Material of the flanges:  
ASTM – A105

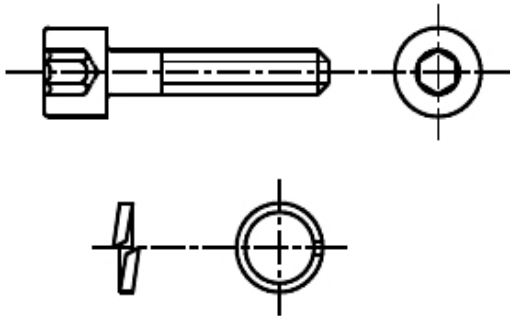
The scope of delivery will include:  
4 x screws DIN 912, stability 8.8  
4 x washer DIN 7980  
1 x sealing ring (O-Ring) NBR

Markus – bitte prüfen ob Oberfläche verzinkt: Ja ? / Nein ?

| SAE    | Max. Druck (bar) | b     | c   | d     | e  | h  | i   | Schrauben/ Screws |                | O-Ring       | Matchcode / Code |
|--------|------------------|-------|-----|-------|----|----|-----|-------------------|----------------|--------------|------------------|
|        | Max. Press (bar) |       |     |       |    |    |     | Metr.             | U.N.C.         | O-Ring       | Matchcode / Code |
| 1/2"   | 420              | 18,24 | 8,5 | 40,49 | 46 | 16 | 55  | M 8 x 30          | 5/16" x 1-1/4" | 18,64 x 3,53 | ARC 6012         |
| 3/4"   | 420              | 23,80 | 11  | 50,80 | 56 | 18 | 71  | M 10 x 35         | 3/8" x 1-1/2"  | 24,99 x 3,53 | ARC 6034         |
| 1"     | 420              | 27,76 | 13  | 57,15 | 68 | 25 | 81  | M 12 x 45         | 7/16" x 1-3/4" | 32,93 x 3,53 | ARC 6100         |
| 1-1/4" | 420              | 31,75 | 15  | 66,68 | 78 | 26 | 95  | M 14 x 45         | 1/2" x 1-3/4"  | 37,69 x 3,53 | ARC 6114         |
| 1-1/2" | 420              | 36,50 | 17  | 79,38 | 94 | 28 | 112 | M 16 x 55         | 5/8" x 2"      | 47,22 x 3,53 | ARC 6112         |

## Technische Information: Schrauben und Sicherungsscheiben

### Technical information: Screws and washers



Metrische Schraube nach DIN 912, verzinkt  
 Festigkeitsklasse 8.8  
 Sicherungsschreibe (Federring) nach DIN 7980

UNC Schrauben nach TCEI UNI 5931 (DIN 912) verzinkt  
 Festigkeitsklasse 12.9  
 UNC Sicherungsscheibe (Federring)

Metric screw TECEI UNI 5931 (DIN 912), galvanized  
 Stability 8.8  
 Spring washer, DIN 7980, galvanized

UNC screw TCEI UNI 5931 (DIN 912), galvanized  
 Stability 12.9  
 UNC washer, DIN 7980, galvanized

## Technische Information: Flansch Material

### Technical information: Flanges material

| Matchcode / Code | Material material   |
|------------------|---|
| AD               | 11SMnPb37 EN 10277-3 (1999)   |
| AF               | 11SMnPb37 EN 10277-3 (1999)   |
| AF2              | ASTM – A105   |
| AFI              | 11SMnPb37 EN 10277-3 (1999)   |
| AFS              | 11SMnPb37 EN 10277-3 (1999)   |
| AG               | ASTM – A105 (AG 26, AG 30, AGAD 26: 11SMN30 EN 10087); (AG 92: GS 400 UNI 4544) |
| AGAS             | ASTM – A105   |
| AGB              | ASTM – A105   |
| AT               | ASTM – A105   |
| ATA              | ASTM – A105   |
| SAE Flansch      | ASTM – A105   |
| SAE Semiflansch  | ST 52.3   |

## Technische Information: Verzinkung

### Technical information: Galvanization

Die Verzinkung erfolgt, wenn gewünscht, mit Standard UNI ISO 2081 – 4520.  
 Where requested the galvanization of the flanges is carried out on UNI ISO 2081 – 4520.

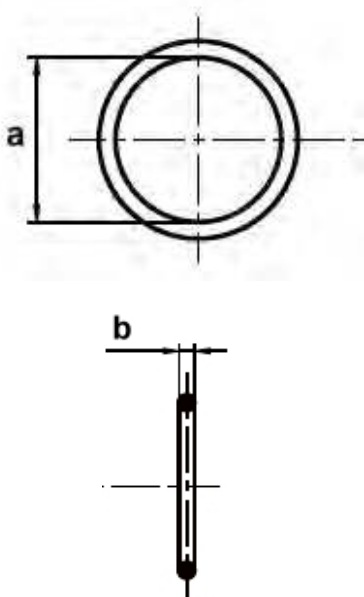
## Technische Information: Maximaler Betriebsdruck

### Technical information: Maximum operating pressure

Der angegebene Betriebsdruck definiert den statischen Betriebsdruck.  
 Höhere sowie gewünschte Betriebsdrücke bitten wir gesondert anzufragen.  
 The specified operating pressure defines the static operating pressure.  
 Higher operating pressures and dynamic operating pressures please inquire separately.



**Technische Information: O – Ringe**  
**Technical information: O-Rings**



| a     | b    |
|-------|------|
| 15,88 | 2,62 |
| 23,81 | 2,62 |
| 41,28 | 3,53 |
| 49,21 | 3,53 |
| 69,85 | 3,53 |
| 14,00 | 1,78 |
| 18,77 | 1,78 |
| 25,12 | 1,78 |
| 18,72 | 2,62 |
| 31,42 | 2,62 |
| 37,77 | 2,62 |
| 18,64 | 3,53 |
| 24,99 | 3,53 |
| 29,75 | 3,53 |
| 32,93 | 3,53 |
| 37,69 | 3,53 |
| 47,22 | 3,53 |
| 56,74 | 3,53 |
| 69,44 | 3,53 |
| 85,32 | 3,53 |

## Produktbereiche:

- Zylinder
- Motoren
- Pumpen
- Cetop Ventile
- Wegeventile
- Regelventile
- Aggregate
- Meß- und Elektrotechnik
- Getriebe
- Installationsmaterial



**ASSFALG GmbH & Co. KG**

**Am Pfarrgarten 8 · D-89597 Unterwachingen**

**Telefon: +49 (0) 73 93 /95 45-0 · [www.assfalg.com](http://www.assfalg.com)**